

Edington



DEVELOPMENT PLAN

2005

Contents

Section	Page
<i>Introduction</i>	1
<i>Housing</i>	3
<i>Environment</i>	4
<i>Transport</i>	6
<i>Health & Social Services</i>	7
<i>Business & Employment</i>	8
<i>Computers & Internet Broadband Services</i>	10
<i>Local, Community, Social & Leisure Provision</i>	11
<i>Appendices</i>	13
<i>Acknowledgements</i>	21

Introduction

The Parish

Edington is a desirable ancient village which attracts many visitors both to its unique surrounding countryside and the ambience of the beautiful Priory Church. With its origins preceding the Dark Ages, Edington is reputed to be the site of the Battle of Ethandun, at which King Alfred the Great vanquished the Danes in 878 AD.

The village is situated below the dramatic escarpment of Salisbury Plain. Being on the old pilgrim route midway between Bath and Salisbury, it was the natural place for the Bonshommes order of monks to build a large priory, which thrived up until the dissolution of the monasteries in 1539 by Henry VIII. Only the walls of the monastery and the Priory Church remain.

Edington remained a key point on the main road between the two cities and, being at an important junction between the farming area of Salisbury Plain and Trowbridge, the centre of the woollen industry, it flourished in the shadow of the sheep and weaving trades.



With the advent of the railway in the 19th century, the main route was diverted through Westbury and Edington became a backwater, reverting to being a mainly farming community.

The adjacent villages of Edington and Tinhead were merged in a local government reorganisation many years ago. The attractive street scene is characterised by brick houses and cottages, some thatched. Recent housing development has not increased the population which has remained stable for many decades.

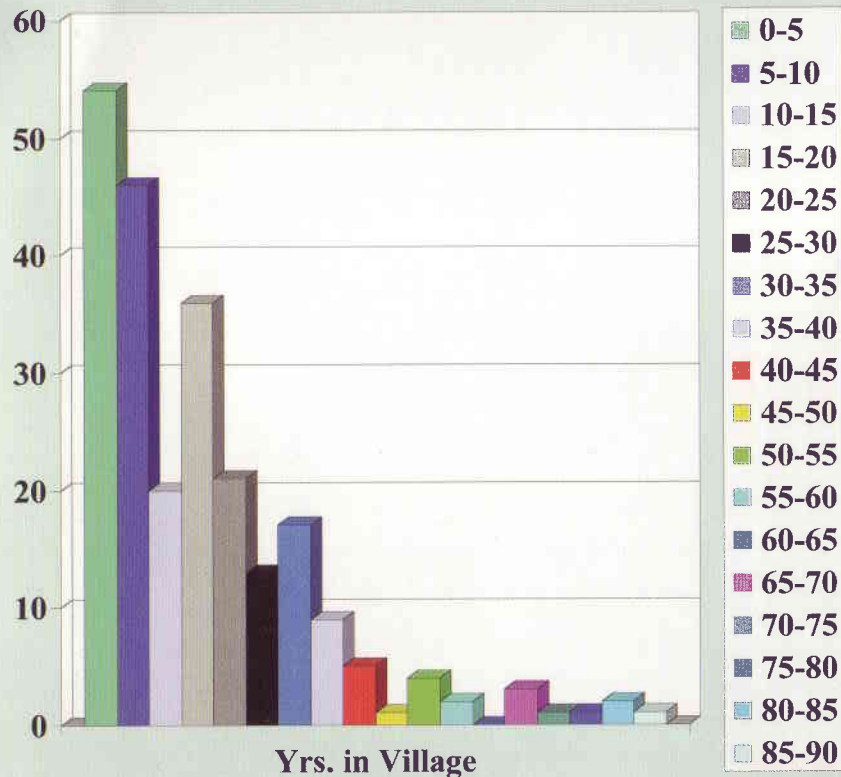


The Plan

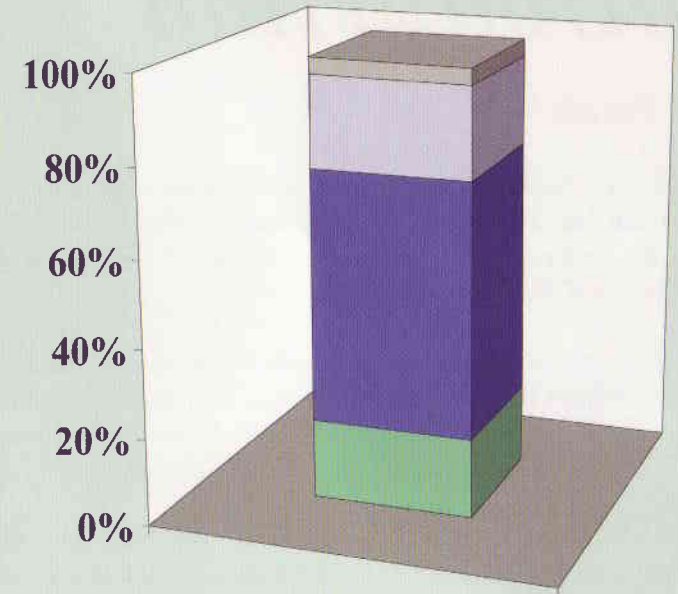
In common with many villages, over the years Edington has suffered a decline in community facilities. Of the former four public houses, three shops, post office, bakery and school, only one pub and a part-time Post Office remain. However, several initiatives by individual villagers and the Parish Council have reversed this trend so that Edington is now one of the most desirable villages in the county.

Following two earlier Village Appraisals, the Parish Council decided to identify the present needs of the community to formulate a realistic Development Plan. An open working group was formed to identify issues and undertake a public survey. A questionnaire was designed and distributed to every household and the response of over 75% was analysed and published in The News. Residents were invited to attend a consultation on the final draft document at the 2005 Annual Parish Meeting. The Parish Council formally adopted this plan at the meeting on 12th September 2005.

Number of years people have lived in the village



Age Profile



■ Under 18 ■ 18-64 ■ 65+ ■ Details not given

The Way Forward

The participation of parishioners has enabled the working group to produce a plan which aims to conserve what they value and to provide a framework for change where it is needed.

After the data from the questionnaires was considered, the working group identified a set of issues for each section of the Plan and then went on to formulate an action plan for each issue. Some of the key recommendations are highlighted on the following pages, whilst the complete issues and actions for each section are listed in total in the appendices on page 13.

Some action is already moving forward, but the working group is planning to identify 'Partners' to initiate the remaining recommendations. These Partners could be the Parish, District, or County Council or groups within the parish.

This Plan provides the Partners with action plans and proposed time scales to assist with budget planning and making appropriate applications for funding. The Parish Council intends to review the Plan on a regular basis.

Housing

Present Housing

The Parish consists of two main areas of settlement, Edington and Tinhead, together with a number of farms and other isolated properties. Its situation has resulted in spasmodic development over the centuries with properties gradually spreading out from the areas around the Priory Church and the village green in Tinhead. Since the Second World War, some major changes have occurred. Many cottages have been extended, amalgamated into larger properties or demolished and replaced with detached dwellings.



RECOMMENDATIONS

Landowners will be encouraged to support small scale housing development.

The Parish Council will recognise the need for "affordable" housing and give it priority.

New developments including extensions and alterations should be in keeping with the character of the village street scene.



Earlier developments in the Weir were followed in the 1960s when two estates consisting mainly of bungalows, were built and greatly expanded the housing stock within the village. Since that time, only occasional, mostly infill, development has taken place.

At present, the building limits in and around the village mean that it is difficult to obtain planning permission for new building proposals.

Future Housing

The results of the questionnaire (along with those of previous surveys) have shown that many people (52%) were in favour of new housing development. A large minority (41%) would not favour further housing provision.

Among those favouring new housing, the preference was for a mixture of small and medium sized accommodation. This is in accordance with the latest directives from West Wiltshire District Council, encouraging "affordable" housing development within villages together with a policy of greater housing density in rural developments.

The Housing Needs Survey 2004 for the villages of Bratton and Edington investigated the affordable housing need for local people. It showed that, because of Edington's earlier scheme for six dwellings, there is no need for further social housing at this time.

Environment

Almost 100% of local residents agree that the local countryside is important to them.

Huge changes are taking place in agriculture and these changes may affect the way the countryside looks around the village. The milking herds have disappeared which will mean more land used for beef production and put under the plough. Local landowners have been very generous in the past in allowing access to their land, with the majority of users being responsible.

81% of people were concerned about mobile phone masts and 80% expressed concern regarding the emissions from the cement works chimney.

36% wished for more street lighting, although there was no agreement on possible sites. The footpaths and lanes can require a torch to be negotiated safely at night. In some areas householders' halogen security lights also cause a problem.

Other issues of concern to residents include:

- Illegal dumping of commercial rubbish and litter
- Dog fouling of the footpaths
- Enhancement of the Playing Field
- Maintenance of the purity of our watercourses and their associated historic buildings
- Ease of access to the Plain

RECOMMENDATIONS

- Care for the environment should be encouraged.*
- Communication between villagers and farmers should be encouraged.*
- Green verges, open spaces and hedgerows should be maintained and where possible improved.*

Paths, Roads & Lanes

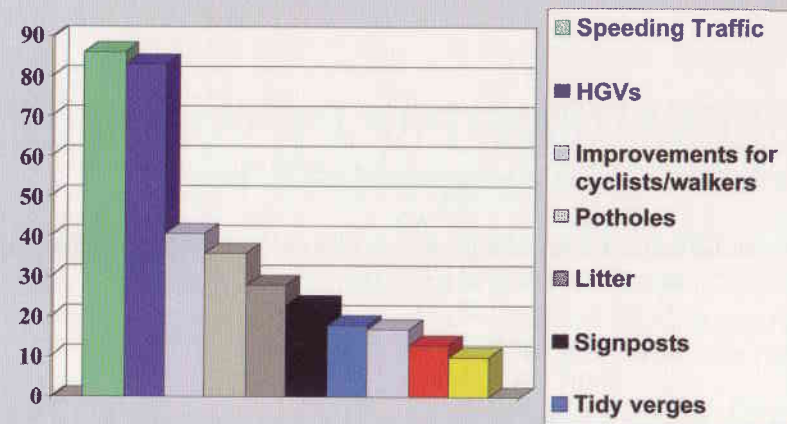
'The Footpaths of Edington' booklet edited by Heather George is produced by the Parish Council. In addition permissive paths are made available by local landowners from time to time.

77% of respondents were happy that footpaths could be found and 55% of them used footpaths at least weekly. 9% never ventured onto the footpaths.

Just fewer than 50% of respondents said that they would help with maintenance and management of the footpaths.

Signposting within the village has been an issue in the past, but over the last few years much consideration has been given to this subject by the Parish Council. Just over 40% felt that improvement of signposting in the village was the least important item in the list for them.

Number Scoring as "Highest Priority" for Paths, Roads and Lanes



Speeding traffic represented the greatest concern in relation to roads followed by the amount of HGV traffic. The third area of concern is the improvement of the safety of the roads for walkers and cyclists, particularly the B3098.

Considerable efforts have been made in the past to address the situation but so far with no success. The Parish Council continues to lobby to find ways to curtail speeding and HGV use of village roads.



RECOMMENDATIONS

Press for the reduction of HGV through traffic.

Improve safety for cyclists and walkers between the two ends of the village

Raise awareness of EVES efforts.



Transport

The responses to the questionnaire raised few issues which were of concern to residents. This is probably because only 4% of households do not possess a car (whereas 60% have two or more vehicles).

Edington is fortunate in having a bus service passing through the village. The service between Trowbridge/Westbury and Devizes/Lavington operates 8 times daily in both directions. A reduced service operates on Saturdays and school holidays but there are no services on Sundays or in the evenings.

However, previous surveys have resulted in requests for better bus services through the village with particular emphasis on evening services to allow young people to attend youth clubs, visit the cinema etc.

For longer journeys, Westbury Railway Station offers services to London and a wide range of towns and cities in South and Western England and South Wales.



The Three Villages Minibus is available for private hire and offers services to Westbury, Devizes and Salisbury as well as “one-off” trips during the summer months.

The Four Villages Link provides transport to those needing assistance with, for example, visits to doctors and hospitals. This service is especially useful to those without cars as well as the elderly and less mobile.

The “Hopper” minibus provides a service to the Royal United Hospital in Bath and collects and delivers people to their door.

Concern about safety discourages many people from cycling around the district.

A surprisingly large number of residents (46%) have stated that they are willing to car-share. Whilst recognising the difficulty in establishing suitable schemes, the idea could be explored further.

RECOMMENDATIONS

Publicise the bus timetables and services.

Explore ways in which the Three Villages Minibus can be used more widely.

Investigate the development of car-sharing schemes.



Health & Social Services

West Wiltshire Primary Care Trust (PCT) is the primary provider of health services for Edington. It is responsible for all community health services such as district nurses, health visitors, dietitians, physiotherapists, specialist nurses and chiropody. In addition it provides maternity services and community hospitals including Westbury hospital. It pays for GP services and services provided for West Wilts patients by acute hospitals such as the Royal United Hospital in Bath.

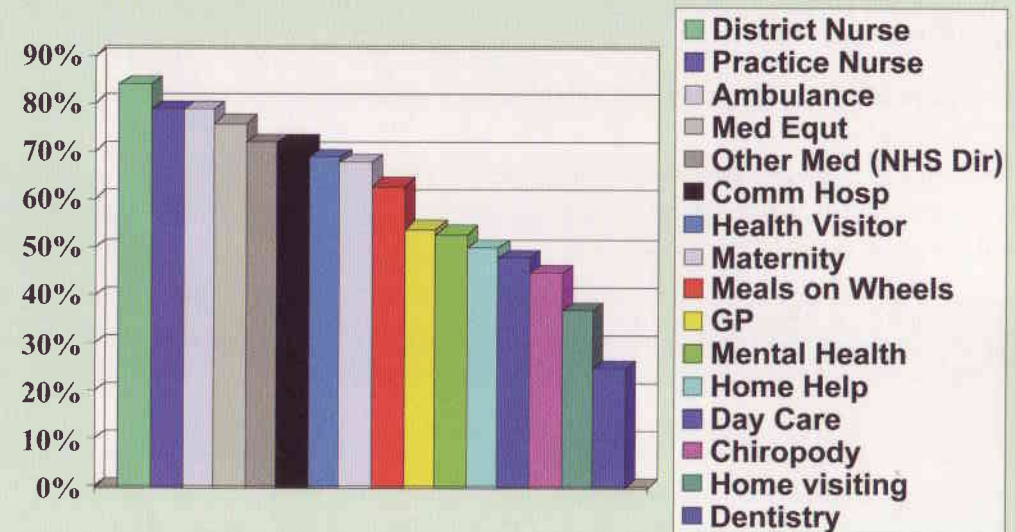
Most of the population of Edington are registered with Eastleigh surgery in Westbury or its branch at Bratton, although some residents are registered with the surgeries at West Lavington and Market Lavington.

The questionnaire results seem to indicate that health services in the area are failing to meet all of our expectations. For each service the numbers responding varied and this is thought to reflect the percentage of villagers using different services.

RECOMMENDATIONS

*Share questionnaire results with the local Primary Care Trust.
Present report to the Patient and Public Involvement Forum.
Get involved in the West Wilts PCT "Making it Better" initiative.*

Percentage Satisfied with Health and Social Services



The response to services run by the PCT indicate that approximately 70% of residents are happy with services provided. Chiropody was the exception with only 47% satisfied with the service. The majority of respondents answered the questions relating to GP services but only half of them were happy with current service provision, with 63% reporting dissatisfaction with out of hours and home visiting. Practice nurses by contrast received a massive 80% satisfaction rate.

Nearly 80% of respondents were unhappy with current dental services. The scale of dissatisfaction probably reflects widespread difficulties with the NHS dental provision. Only 62 respondents answered the question on mental health services and of these 62% were happy with the provision.

Business & Employment

The survey incorporated information from some 326 people aged between 18 and 64 (i.e. of working age). Of these, 89% say they are either in full-time or part-time employment or self employed, and 2.8% describe themselves as unemployed. The remaining are sick, disabled, in full time education or identified their situation as “other”.

Of those answering the question about where they worked, 16% work more than 30 miles from Edington, 37% between 10 and 30 miles, 27% within 10 miles, 8% in the Parish and 13% at home.

Around 48% of the working population of the parish work within 10 miles of home, somewhat less than many equivalent rural parishes, and the figure of 21% working within the parish could certainly be increased. Increased local/home working would be in keeping with government policy of reducing unnecessary travel to reduce the impact on the environment, improve road safety and reduce costs to the economy.

The Parish has always sought to support local employment and businesses, and in addition to the local post office, pub and individuals working at home, there are a number of specific local successes including The Station Yard, established after a consortium of local people bought the railway yard (mainly to prevent a chemical processing company taking it over). There are now 16 leased units used by individual businesses employing over 70 people, mostly from the surrounding area. The businesses are identified on page 18.

62% of respondents said that there should be opportunities to develop further employment potential in the village, and 18% felt that there shouldn't (20% didn't give an opinion).

Technology has improved considerably in recent years so it may be worth revisiting options to provide workplaces for people who may well have full time jobs but want to work away from their employer's “functional office” and who don't want to work in their homes.





Improved opportunities for working within or close to the parish would result from:

- Support for the establishment of rural business planning decisions
- Availability of new technology such as internet broadband
- Support facilities such as office supplies and equipment, fax machines etc.
- Availability of venues and facilities within the Parish for people to work away from their employers' offices but who do not have full office facilities at home

A particular issue of concern to the local community has been the loss of the Nursery School, the School and Holiday Club in 2004 due to a number of factors including changes in Government policy and the location of the (former) school building where they operated. This followed the closure at the same site of Computers@theschool due to the availability of free computer facilities and training in Westbury. Farming and land-based employment has always featured strongly in the parish, but the effect of changes in the farming industry is an issue for the local community and environment.

RECOMMENDATIONS

Support the establishment of rural business.

Encourage existing businesses to develop and create more jobs.

Provide useful and supportive information for local businesses.



Computers & Internet Broadband Services

At the time of completing the questionnaires (early summer 2004 when WiFi broadband was available but BT wasn't) only 39% of respondents said they were aware of the availability of broadband, and 50% were not (11% did not say). 49% of respondents said they would use broadband if available and 34% said not (17% giving no opinion).

Of those answering the question, 74% said they owned a computer and 26% did not. Of those who owned a computer, almost all said they used the internet.



Computers@theschool had provided a range of facilities for use by the local community, along with training and support. Unfortunately, for the reasons described under "Business and Employment" above, the initiative could not be sustained. According to the survey, 95% of people had been aware of Computers@theschool. A number of computer businesses operate from within the Parish several of which offer support for computer software and hardware.

The availability of broadband is an important factor in making it feasible for people to telework or for businesses to establish themselves in the parish. Internet broadband has been available since the beginning of 2004 as a Wifi service and has now been superseded by the ADSL broadband service provided by BT. www.bt.com/broadband

57% of people expressing a view said they would use a village website if available, and 43% said not (28% of respondents did not have a view).

RECOMMENDATIONS

*Investigate the development of a village Website.
Provide information on BT broadband services.*



Local, Community, Social & Leisure

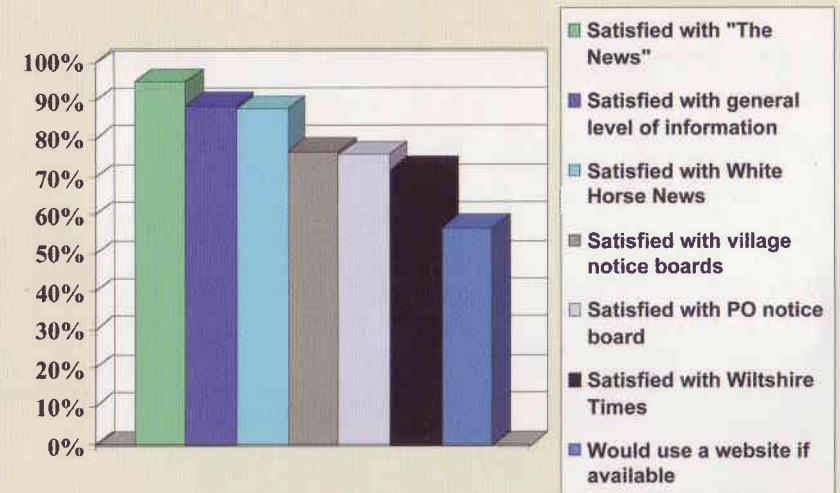
The last shop in Edington was closed in 1993 due to retirement. The response to the question on local services indicated that 94% would shop in Edington if they could. Currently 87% support Hillsworth Stores 2 miles away in Bratton.

Milk, fish, newspapers, supermarket products and Library facilities are currently delivered to the village. However, it appears from the survey results that very few people use these services.

A key aim of the Parish Council is to ensure the most appropriate means of communication is provided across the village community.



Percentage Satisfied with Sources of Local Information



Information on local issues/events and what is available in the village is provided through a range of media. Most people were extremely satisfied; over 89% thinking the level of information was good and 95% stating it was due to publication of 'The News'.

Social life of the village is highly valued, with 77% of people saying that this is important to them. Many people expressed an interest in participating in local pursuits, 87 stating that they would become involved if the programme was more varied and publicised.

A number of groups are established and well supported providing social and sporting pastimes in the village. Seventeen pursuits were identified on the questionnaire with 409 participants involved in one or more activities. Many of these events took place in the Parish Hall, the Church, the Lamb Inn, individual homes and (until recently), the old school.

A key area of concern, however, is the situation regarding venues. The one remaining community meeting place - the Parish Hall - is inadequate for many activities due to the lack of appropriate space, amenities and parking provision. Closure of the school has created a void in many ways, particularly as a meeting place for people in the Tinhead area of Edington (it was the home of the morning 'drop-in' which has now moved to the Parish Hall). In response to the question on what was considered to be most important meeting place in the village, the highest response was 89% for the Parish Hall. The Parish Hall has recently been adapted to comply with Disability Act legislation and further enhancements are necessary to improve the ambience and comfort of the facility.

51 Households responded to the questions asked about children, giving information on a total of 100 children. In the past there has been a perception that we had a relatively low number of children in the village.

The facilities most used by the under 5s were the playing field, closely followed by the Under 5s Club which was formed in the late 1970s and continues to be an important part of village life.

In addition to those pupils identified attending Bratton, Lavington and Matravers Schools, there are almost an equal number of secondary school pupils who between them go to an assortment of other schools both near and far, mainly by car (33%).

Most children in the 5 – 11 age group attend Bratton School and the majority of those over 11 attend Lavington School, even though we are in the catchment area for Matravers School.

The questionnaire highlighted a lack of provision in the village for young people, indicating that more recreational facilities are needed. Of the 191 responses to these questions 54 suggested additional activities; in particular the provision of a Youth Club: 18 people have reported that they are prepared to help with Youth/sports Club. In recent years major additions and improvements have resulted in the provision of a fully HSE/EEC compliant Playfield and Skate Board area for young people.

RECOMMENDATIONS

Investigate the possibility of acquiring a more appropriate and central site for a community Hall.

Investigate further the need for a youth/sports Club.

Undertake a feasibility study of local shopping.



Appendices - Details of the Issues and Actions

Housing

THE ISSUES	BACKGROUND	ACTION
<p>The results of the questionnaire (along with those of previous surveys) have shown that many people (52%) were in favour of new housing development. A large minority (41%) would not favour further housing provision.</p>	<p>The Parish consists of two main areas of settlement, Edington and Tinhead, together with a number of farms and other isolated properties. Its situation, lying immediately below the escarpment of Salisbury Plain, has resulted in spasmodic development over the centuries with properties gradually spreading out from the areas around the Priory Church and the village green in Tinhead.</p> <p>Since the second world war, some major changes have occurred. Many cottages have been extended, amalgamated into larger properties or demolished and replaced with detached dwellings</p>	<p>Landowners will be encouraged to support small scale housing development.</p>
<p>Among those favouring new housing, the preference was for a mixture of small and medium sized accommodation. This is in accordance with the latest directives from WWDC, encouraging "affordable" housing development within villages together with a policy of greater housing density in rural developments.</p> <p>From time to time, a large building such as the chapel or the school may become available for housing. Any proposals to create small residential units should be encouraged.</p>	<p>In the 1960s, two estates, consisting mainly of bungalows, were built and greatly expanded the housing stock within the village. Since that time, only occasional, mostly infill, development has taken place.</p> <p>At present, the building limits in and around the village mean that it is difficult to obtain planning permission for new building proposals.</p> <p>The Housing Needs Survey 2004 for the villages of Bratton and Edington investigated the affordable housing need for local people. It showed that, because of Edington's earlier scheme for six dwellings, there is no need for further social housing at this time.</p>	<p>The need is for a small scale development of up to 12 affordable homes (2 and 3 bedrooms). However, the constraints of the Policy Limits of the District Plan now prevent any suitable site being brought forward for development. Therefore, we seek some relaxation of the Policy Limits.</p> <p>The Parish Council will recognise the need for "affordable" housing in any new application to build two or more houses on a specific site.</p> <p>Wherever possible, the Council will encourage extensions and alterations as well as new development to be in character with the village street scene.</p>

Environment

THE ISSUES	BACKGROUND	ACTION
<p>Almost 100% agree that the local countryside is important to them.</p>	<p>Huge changes are taking place in agriculture and these changes may affect the way the countryside looks around the village.</p> <p>The milking herds have disappeared which will mean more land used for beef production and put under the plough.</p> <p>Local landowners have been very generous in the past in allowing access to their land. This has been helped by the majority of users being responsible.</p>	<p>Communication between villagers and farmers should be encouraged to enhance facilities for villagers, and to support the care of the countryside; encouraging people to make a living both from, and in, the countryside.</p> <p>Encouraging those who currently do not participate – possibly by widening the range of activities.</p> <p>Monitor land use to take advantage of any opportunities that present themselves as a result of the changes underway to enhance the environment.</p>
<p>81% of people were concerned about the mobile phone masts and 80% expressed concern regarding Lafarge.</p>	<p>The Parish Council would like to have more influence on these matters particularly within the build environment of the village. Encourage them be positioned outside of the village rather than within.</p>	<p>The Parish Council to keep a watching brief</p>
<p>36% wished for more street lighting, although there was no agreement on possible sites.</p>	<p>The footpaths and lanes can require a torch to be negotiated safely at night. In some areas the householder's halogen security lights also cause a problem.</p>	<p>More research may produce a consensus, but there appears to be no clear demand. It is important to consider the issue of light pollution – both between neighbours and village-wide.</p>
<p>Other issues include: Illegal dumping of commercial rubbish and litter Dog fouling of the footpaths Enhancement of the Playing Field Maintenance of the purity of our watercourses and their associated historic buildings Ease of access to the Plain</p>	<p>Dog mess bins have been provided throughout the village but not all dog owners use them</p>	



Paths, Roads & Lanes

THE ISSUES	BACKGROUND	ACTION
<p>77% of respondents were happy that footpaths could be found and 55% of them used footpaths at least weekly. 9% never ventured onto the footpaths.</p> <p>Just fewer than 50% of respondents said that they would help with maintenance and management of the footpaths.</p>	<p>The Footpaths of Edington Booklet edited by Heather George is produced by the Parish Council.</p> <p>In addition there are Permissive Paths made available by local Landowners from time to time.</p>	<p>Awareness raising of EVES efforts.</p> <p>"Adopt a Footpath" should be encouraged.</p> <p>The Footpaths booklet should be revised to ensure it reflects the current situation and be re-published.</p>
<p>Just over 40% felt that improvement of signposting in the village was the least important item in the list for them</p>	<p>Signposting within the village has been an issue in the past, but over the last few years much consideration has been given to this subject by the Parish Council</p>	
<p>Speeding traffic represented the greatest concern in relation to roads followed by the amount of HGV traffic. The third area of concern is the improvement of the roads for walkers and cyclists.</p>	<p>The Parish Council continues to lobby to find ways to curtail speed and HGV use of village roads.</p> <p>Traffic hazards include: Junction by The Plough, Lower Road/Sandy Lane area Court Lane/Tinhead Road junction B3098 outside the former School Corners by Boxwood Cottage at the top of Inmead Junctions of Parsonage Lane and Downsview</p>	<p>To continue to press for the reduction of HGV through traffic and the enhancement of traffic management.</p> <p>All methods of reducing traffic speeding will need to be explored.</p>
<p>The B3098 is unsafe for pedestrians and cyclists</p>	<p>Considerable efforts have been made in the past to address the situation but so far with no success.</p>	<p>To find a safer way to travel between the two ends of the village.</p>



Transport

THE ISSUES	BACKGROUND	ACTION
<p>The responses to the questionnaire raised few issues which were of concern to residents. This is probably because only 4% of households do not possess a car (whereas 60% have two or more vehicles).</p> <p>However, previous surveys have resulted in requests for better bus services through the village with particular emphasis on evening services to allow young people to attend youth clubs, visit the cinema etc.</p>	<p>Edington is fortunate in having a bus service passing through the village. The service between Trowbridge/ Westbury and Devizes/Lavington operates 8 times daily in both directions. A reduced service operates on Saturdays and school holidays but there are no services on Sundays or in the evenings.</p> <p>For longer journeys, Westbury Railway Station offers services to London and a wide range of towns and cities in South and Western England and South Wales.</p> <p>The Three Villages Minibus is available for private hire and offers services to Westbury, Devizes and Salisbury as well as "one-off" trips during the summer months.</p> <p>The Four Villages Link provides transport to those needing assistance with, for example, visits to doctors and hospitals. This service is especially useful to those without cars as well as the elderly and less mobile.</p> <p>The "Hopper" minibus provides a service to the Royal United Hospital and collects people from their homes.</p>	<p>The bus timetable should be extensively publicised to encourage patronage.</p> <p>The Three Villages Minibus is a local amenity and ways in which it could be more widely used should be explored. This may be particularly appropriate for evening journeys rather than seeking to extend the existing bus service. Volunteers should be encouraged to participate in the Four Villages Link.</p> <p>Encourage the use of the "Hopper" service.</p>
<p>Concern about safety discourages people from cycling around the district.</p>		<p>Examine ways to encourage cycling as well as seeking to create safer conditions for cyclists.</p>
<p>A surprisingly large number of residents (46%) have stated that they are willing to car-share. Whilst recognising the difficulty in establishing suitable schemes, the idea could be explored further.</p>		<p>The creation of car sharing pools should be investigated further.</p>

Health & Social Services

THE ISSUES	BACKGROUND	ACTION
<p>The questionnaire results seem to indicate that health services in the area are failing to meet all of our expectations.</p> <p>For each service the numbers responding varied and this is thought to reflect the percentage of villagers using different services.</p> <p>The results for services run by PCT such as community hospital, district nursing, maternity etc indicate that approximately 70% of residents are happy with services provided.</p> <p>Chiropody was the exception with only 47% satisfied with service</p> <p>GP services. The majority of respondents answered this, but only half of them were happy with current service provision, with 63% reporting dissatisfaction with out of hours and home visiting</p> <p>Practice nurses by contrast received a massive 80% satisfaction rate.</p> <p>Dental services</p> <p>Nearly 80% of respondents were unhappy with current services. The scale of dissatisfaction probably indicates that dissatisfaction is across both NHS and private provision.</p> <p>Only 62 respondents answered the question on mental health services and of these 62% were happy with provision.</p>	<p>West Wilts Primary Care Trust (PCT) is the primary provider of health services for Edington. It is responsible for all community Health services e.g. District nursing, health visiting, dietitians physiotherapists specialist nurses chiropody etc plus Maternity services and community hospitals including Westbury hospital. It pays for GP services and services provided for West Wilts patients by acute hospitals such as the Royal United Hospital in Bath.</p> <p>The Trust has been running with a big budget deficit over the last few years and has failed to achieve a single star in the government's star rating system during the last two years. It has just appointed a new chief executive who is shared with the neighbouring PCT (Kennett and North Wilts). She is committed to correcting the overspend of both trusts and improving services; this may result in changes to some services in the near future.</p> <p>The General Practitioners are (and always have been) independent of the NHS and contract to provide services for the NHS through the PCT. They are independent practitioners and have a great deal of autonomy over exactly what and how services are provided. They do have to meet government targets and directives to receive funding and are answerable to the PCT.</p> <p>Most of the population of Edington are registered with Eastleigh surgery in Westbury or its branch at Bratton, however some residents are also registered with the surgeries at West Lavington and Market Lavington.</p> <p>There is a national shortage of NHS dentists. Recent changes to dentists' pay have failed to attract more to the service.</p> <p>Mental health services are provided by Avon and Wiltshire Mental Health Trust.</p>	<p>Share results with the local PCT and seek to influence change during the current service review.</p> <p>Present report to the Patient and Public Involvement Forum.</p> <p>Present findings to Westbury health forum and Westbury carer's group.</p> <p>Share results with local GP services and the surgeries patient forum.</p> <p>Explore the potential for increasing services at Bratton branch surgery to relieve pressure on the main surgery.</p> <p>Lobby West Wilts PCT to give priority to improving this provision? Public meeting to discuss results with the PCT and GPs. Share results with mental health trust.</p> <p>Get involved in the West Wilts PCT "Making it Better" initiative.</p>
<p>We surveyed some social services such as day care and home helps. The responses only showed a 50% satisfaction rate.</p>	<p>Social services are provided by the county council and paid for through the Council Tax. The local office is Trowbridge. The range of services provided is vast ranging from child protection and adoption to day care, residential care, and social work, social care in the community, provision of equipment and aids and support for those with disabilities.</p>	<p>Share results with social services</p>

Business & Employment

THE ISSUES	BACKGROUND	ACTION
<p>Around 48% of the working population of the parish work within 10 miles of home, somewhat less than many equivalent rural parishes, and the figure of 21% working within the parish could certainly be improved. Increased local/home working would be in keeping with government policy of reducing unnecessary travel to reduce the impact on the environment, improve road safety and reduce costs to the economy.</p> <p>62% said that there should be opportunities to develop further employment potential in the village, and 18% felt that there shouldn't (20% didn't give an opinion).</p> <p>Improved opportunities for working within or close to the parish would result from</p> <ul style="list-style-type: none"> - Support for the establishment of rural business planning decisions. - Availability of new technology such as internet broadband, and facilities to support working such as office supplies and equipment, fax machines etc. - Availability of venues and facilities within the Parish for people to work away from their employers' offices but who do not have full office facilities at home 	<p>The survey incorporated information from some 326 people aged between 18 and 64 (i.e. of working age). Of these, 89% say they are either in full-time or part-time employment or self employed, and 2.8% describe themselves as unemployed. The remaining are sick or disabled or in full time education or identified their situation as "other".</p> <p>Of those answering the question about where they worked, 16% work more than 30 miles from Edington, 37% between 10 and 30 miles, 27% within 10 miles, 8% in the Parish and 13% at home.</p> <p>The Parish has always sought to support local employment and businesses, and in addition to the local post office, pub and individuals working at home, there are a number of specific local successes including:</p> <ul style="list-style-type: none"> • The Station Yard, established after a consortium of local people bought the railway yard (mainly to prevent a chemical processing company taking it over). There are now 16 leased units used by individual businesses employing over 70 people, mostly from the surrounding area. The businesses include: <ul style="list-style-type: none"> - Miles & Francis, a landscape gardener - ACR, a civil engineering company - Microcheck Services Ltd., an analytical laboratory - Screw It & Bolt It, a pub renovation company - Prospect Land, property developers - O'Neil, a kitchen machinery importer - Westbury Windows and Conservatories, a double glazing company - Hicks & Don, wine merchants - SJK Mouldings, boat builders - H2 Lifestyle, boat builders - Bowstring Design, designers, manufacturers and erectors of exhibition stands world wide - Michael Bulling Dairy, a door-step and wholesale milk & associated goods delivery service - Rondar Race Boats, a boat building company - Transhold Logistics, a transport distribution company. <p>Fitzroy Farm craft centre, garden centre, coffee shop / light lunches and Fitzroy Designs Ladies fashion outlet also operate within the parish</p> <p>There were attempts some years ago in Wiltshire to create telecottages (facilities to assist learning, access to technology, access to work etc. for a local community) which experienced some difficulties. However, technology has now improved considerably so it may be worth revisiting options to provide workplaces for people who may well have full time jobs but want to work away from their employer's "functional office" and who don't want to work in their homes, or provision of facilities for local businesses to have meetings or access to services such as word processing.</p>	<p>Support for the establishment of rural business in local authority (WWDC) planning decisions.</p> <p>Encourage existing businesses to develop and create more jobs by undertaking a survey of businesses in the Parish (what businesses operate here and what are their main concerns). Business rates are a known concern so support for a reduction in business rates and advice to businesses on reliefs from business rates could be two specific actions.</p> <p>Encourage existing local businesses to attempt to recruit locally before looking further afield.</p> <p>Support the Chamber of Commerce</p> <p>Appoint someone on the Parish Council (or co-opt someone) who will encourage the influx and development of local business (e.g. by finding out when people are looking to set up businesses in the area and encouraging them to the parish). Produce a plan for such a person to work to.</p> <p>Provide useful information for local businesses obtained from WWDC, WCC, and Chamber of Commerce etc. Explore provision of facilities using the newly available internet broadband services, and facilities to support working such as office supplies and equipment, fax machines etc.</p> <p>Liaise with teleworking organisations (European Telework Online, The Telework Association) and with other local projects (via Community First) to establish why some pilot projects failed and establish whether models have now been developed that are successful.</p>

Business & Employment Continued

Farming and land-based employment has always featured strongly in the parish, but the effect of changes in the farming industry is an issue for the local community and environment

"Traditional" farming is increasingly under threat due to the squeeze on incomes and margins across the farming industry. For a rural parish such as Edington this impacts both on local employment and on the local environment.

The development of agriculture-related industry should be encouraged, particularly innovative, small-scale use of land as smallholdings or small farms. Appoint someone with a suitable (farming) background to liaise with local farmers and DEFRA.

Computers & Internet Broadband Services

THE ISSUES	BACKGROUND	ACTION
<p>At the time of completing the questionnaires (early summer 2004 when WiFi broadband was available but BT wasn't) only 39% of respondents said they were aware of the availability of broadband, and 50% were not (11% did not say). 49% of respondents said they would use broadband if available and 34% said not (17% giving no opinion).</p> <p>The availability of broadband is an important factor in making it feasible for people to telework or for businesses to establish themselves in the parish. 57% of people expressing a view said they would use a village website if available, and 43% said not (28% of respondents did not have a view).</p>	<p>Of those answering the question. 74% said they did own a computer and 26% said that they didn't. Of those who owned a computer, almost all said they used the internet.</p> <p><u>Computers@theschool</u> had provided a range of facilities for use by the local community, along with training and support. Unfortunately, for the reasons described under "Business and Employment" above, the initiative could not be sustained. According to the survey, 95% of people had been aware of <u>Computers@theschool</u></p> <p>A number of computer businesses operate from within the Parish.</p> <p>Since mid-December 2004 ADSL broadband has been made available in the village by BT (www.bt.com/broadband).</p>	<p>Investigate the development of a village Website (possibly as a village youth-led project). A majority of those answering did say they would use a village website, although at 57% it was only a small majority. The small majority may be in part due to a lack of clarity as to what value a village website would have. However, the level of interest does warrant this being explored with a view to the website providing:</p> <ul style="list-style-type: none"> - Local information (perhaps incorporating an on-line version of "The News") - Links to useful information about local transport, health, social services etc. - Information on the local environment, archaeology, natural history etc. <p>[Note: edington.biz and edington.info have been registered and are available for use as domains. WWDC and WCC may provide hosting]</p> <p>The uptake of broadband should be encouraged as this may have knock-on effects in encouraging greater teleworking/ businesses locally</p>

Local, Community, Social & Leisure

THE ISSUES	BACKGROUND	ACTION
The nearest shop to the village is Hillsworth Store at Bratton two miles away.	The last shop in Edington was closed in 1993 due to retirement. The response to the question on local services indicated that 94% would shop in Edington if there was a shop. Currently 87% support the shop at Bratton.	To investigate the feasibility of local shopping. To promote the services available and opening hours of Edington Post Office through "The News". To promote the facilities available at the Bratton shop through "The News".
From the survey very few people used the existing shopping/home delivery services or the mobile library service	Existing delivery services offer Milk, Fish, Newspapers, Supermarket products and Library facilities.	To provide a directory of services available, dates of delivery and contacts.
To ensure the most appropriate means of communication is provided across the village community	Information on local issues/events and what is available in the village is provided through a range of media. Most people were extremely satisfied; over 89% thinking the level of information was good and 95% stating it was due to publication of 'The News'.	Continue the publication of "The News" seeking wider participation and comments from recipients.
Social life of the village is valued quite highly, with 77% of people saying that this is important to them. Many people expressed an interest in participating in local pursuits, 87 stated they would become involved if the programme was more varied and publicised. Inadequate venue and facilities for a range of activities	A number of groups are established and well supported providing social and sporting pastimes in the village. Seventeen pursuits were identified on the questionnaire with 409 participants involved in one or more activities. Many of these events took place in the Parish Hall, the Church, the Lamb Inn, individual homes and (until recently), the Old School.	Establish a team of volunteers willing to offer additional leisure/social activities. Promote a wider ranger of pursuits in a directory/"The News" offering activities, venues, dates and contacts. Promote the availability of current local venues. Investigate and promote the use of other potential meeting places possibly in Bratton and Erlestoke.
The one remaining community meeting place – the Parish Hall is inadequate for many activities due to the lack of appropriate space, amenities and parking provision. Closure of the school has created a void in many aspects of village pursuits, particularly as a meeting place for people in the Tinhead area of Edington	In response to the question on what was considered to be most important meeting place in the village, the highest response was 89% for the Parish Hall. The Parish Hall has recently been adapted to comply with Disability Act legislation and further enhancements are necessary to improve the ambience and comfort of the facility.	In conjunction with the Parochial Church Council investigate the possibility of acquiring a more appropriate and central site for the Parish Hall.
51 Households responded to the questions asked about children, giving information on a total of 100 children.	In the past there has been a perception that we had a relatively low number of children in the village. The facilities most used by the under 5s were the playing field, closely followed by the Under 5s Club which was formed in the late 1970s and continues to be an important part of village life.	Assess the provisions for children within the village are adequate for numbers and age range.

In addition to those pupils identified attending Bratton, Lavington and Matravers Schools, there are almost an equal number of secondary school pupils who between them go to an assortment of other schools both near and far, mainly by car (1/3)

Most children in the 5 – 11 age group attend Bratton School and the majority of those over 11 attend Lavington School, even though we are in the catchment area for Matravers School.

Provision of bus services are affected by this spread and should be considered.

The questionnaire highlighted a lack of provision for young people, and there would appear to be great support for a youth club.

The questionnaire indicated that more recreational facilities are needed for young people. Of the 191 responses to these question 54 suggested additional activities; in particular the provision of a Youth Club: 18 people have reported that they are prepared to help with Youth/sports Club. Many major additions and improvements have resulted in the provision of fully HSE/EEC compliant Playfield and Skate Board area for young people.

Further research is needed to ascertain if a Youth/sports Club is required by the young people of Edington who would attend the club themselves (as there is already a Youth Club running in Bratton).

Identify a network of volunteers willing to be involved in the provision of activities for young people.

Acknowledgements

Edington Parish Council

Community First – Sustain the Plain Small Grants Fund

Edington Fair Committee

Edington Station Yard Ltd

is pleased to be associated with the Edington Development Plan

F R Callaway & Sons Ltd.

is pleased to be involved with the Edington Development Plan

Callaway Scaffolds Ltd

is wishing the Edington Development Plan every success

The Lamb at Edington

is pleased to be involved with developments taking place within Edington

Fitzroy Designs

have pleasure in supporting Edington Development Plan

Working Group

George Fraser

Neil Griffiths

Angie Nicholson

Liz Pike

Sheila Pinson

Elizabeth Webbe

Lise Griffiths – *Proof Reading*

Eric Tyler - *Photography*

INMEAD

Printed by BML Print Management

Telephone 01225 777767 Email: bath.midway.litho@lineone.net

© Edington Parish Council 2005



J. E. Andrew

VIMBRAD

EDINGTON

XX
Edington
SARUM
RVT
to BATH
1753
J. E. Andrew