



Contents

- White Horse Health Centre
- Courtyard Surgery
- Wiltshire Police
- Wiltshire and Bath Air Ambulance
- Wiltshire Council News
- Village Musings
- Wildlife from my window at Edington - Part 3
- Four Villages Link
- Jubilee Players
- Edington and District Gardening Club
- Erlestoke and Coulston Cricket Club
- Forthcoming Road Closures
- White Horse News
- World's Biggest Coffee Morning
- Edington Parish Council
- Salisbury Plain Training Area
- Three Village's Minibus
- October Village Lunch in the Parish Hall
- Edington What's On Diary



Welcome to the sixty fourth and final edition of the Edington Village News produced by villagers for the village of Edington.

In this month's final edition we have our usual articles including the end of season report for the Erlestoke and Coulston Cricket Club and their new pavilion. The results of the Edington and District Gardening Club's flower and produce show and the final part of Stephen's view from his window plus Mercede's Musings, plus we have news of the world's biggest coffee morning.

Thank you and farewell

As you will have read last month we were appealing for a volunteer to take over the compiling of this newsletter, unfortunately no one has come forward to undertake this task and consequently this will be the last edition.

The newsletter was setup back in May 2020 when Covid had struck and the Edington Parish Council decided to produce a monthly newsletter to keep all villagers updated on what was happening both in the village and further afield to help villagers get through those times.

After the covid era had passed the newsletter kept going to provide a source of information to villagers and in July 2024 Pauline and I took over the publishing of it from the parish council, with a view of continuing to provide useful information and articles for villagers both past and present. We have over 150 subscribers in Edington, across the UK and even in Europe. We would like to thank both the subscribers and the numerous contributors over the years who have helped to make the newsletter a success.

Pauline and John



Edington Village News is an independent publication and its content is not influenced by the Parish Council nor any other organisation. Opinions expressed or implied in this publication are not necessarily those of the editors and no responsibility can be accepted for any errors of fact printed in this publication. ©Edington Newsletter



Local surgeries latest



White Horse Health Centre and Bratton Surgery

Westbury surgery TELEPHONE 01373 828330

Bratton Surgery TELEPHONE 01380 831911
For medical emergencies dial 999

Despite requesting information from the surgery they have not sent us anything and their new website no longer has a latest news section so unfortunately we cannot provide any news from the Westbury White Horse Health Centre.

Editors

Dr Edwards & Partners

westburygp.co.uk



Courtyard Surgery, West Lavington

Telephone 01380 813 300
For medical emergencies dial 999

Courtyard surgery continue to produce a monthly newsletter for their patients and it can be found on the link below.

[Latest surgery newsletter can be found here](#)

<https://www.courtyardsurgery.co.uk/>

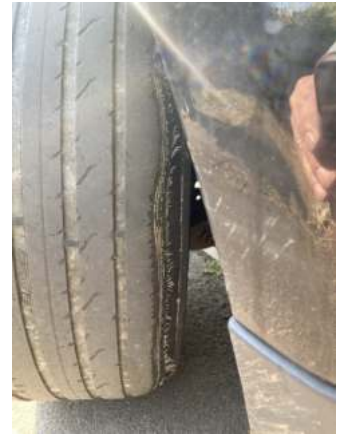


Wiltshire Police

Wiltshire Specials

The #SRSU Specials recently stopped this Range Rover heading into #Westbury:

- No insurance
 - Driver only had a provisional licence
 - 2 tyres with cords exposed
- Driver was reported and the vehicle seized.



On Sat 6 September, our Specials seized this vehicle after it was found delivering food with no insurance. A proactive stop to help keep our roads safe.



Special Constables from the Specials Road Safety Unit where on patrol in Tidworth recently completing proactive Roads Policing Patrols. this e-scooter was seized from a young person and will be destroyed.

Other Offences:

1 x Mobile phone whilst driving

1 x Careless Driving





Chief Constable fortnightly update to the Police and Crime Commissioner - 12 September 2025



Dear Police and Crime Commissioner, Philip Wilkinson,

Across the summer, I have shared many of the successes we have seen under the Safer Streets Summer initiative which is aimed at improving the safety of urban areas in our county.

I wanted to use this fortnight's letter to illustrate how we are supporting our rural communities by both preventing and detecting the crimes which impact them the most.

We know that rural crime has a lasting effect on its victims and creates a huge financial burden for businesses in Wiltshire and Swindon. Evidence and research also suggest that criminals who commit rural crimes are linked to national and international organised crime groups (OCGs).

To tackle this, we have adopted a whole force approach – mobilising subject matter experts within our organisation, neighbourhood policing teams, our drone, dog and response units, CID and armed response units.

As a result of this approach, along with developing our collaborations with partner agencies and neighbouring forces, we've seen significant operational successes.

These include:

22 people arrested for Hare Coursing/Poaching since the start of 2025 – a 500% increase compared to the previous 12 months

Of these 22, 15 were convicted and more than £3,000 in fines were issued

Just last week we arrested four people on the A350 at Chippenham on suspicion of going equipped for hare coursing following a report of suspicious activity in a field in Burbage, near Marlborough, from a member of the public

Five people were convicted in August for night poaching in Cholderton, near Amesbury. The Rural Crime Team, firearms and drone units, located the offenders hiding in a hedge. The offenders, who were not from Wiltshire, were given fines of more than £2,000.

To further deter for those intent on committing crimes in our rural communities, we also need to ensure we are denying them access to our road network.

This prevention work was illustrated last Friday when our Roads Policing Unit conducted a targeted operation to prevent criminal activity on our county's roads.

As a result:

103 drivers were stopped

Five people were arrested

71 motorists were reported for speeding

Five vehicles were seized, and one stolen vehicle was recovered.

Successfully tackling rural crime is not something that the police can do alone. We need the support of our local communities and to work in partnership with other agencies.

We have shared many examples of this cross-partnership approach as part of National Rural Crime Week which has been running across this week. Our communities can read more about the work your office does to



protect our rural communities here.

Examples of this multi-agency work includes:

Operation Galileo – a nationwide operation where information is shared between forces enabling us to increase patrols in locations most likely to be affected by hare coursing

Operation Ragwort – led by Deputy Chief Constable Mark Cooper, a collaboration formed between all police forces and Police and Crime Commissioners in the south-west and our bordering forces in the south. Its goal is to share intelligence and resources between the forces in Wiltshire, Avon and Somerset, Devon and Cornwall, Dorset, Gloucestershire, Hampshire and Thames Valley in order to provide a comprehensive and co-ordinated response to rural crime. During the latest activity in March, we stopped over 100 vehicles

Publicising our most wanted rural crime suspects – we will shortly be working in collaboration with CrimeStoppers to share photos of outstanding suspects linked to rural crimes with our communities. This will be a highly visible campaign and one we hope will both lead to arrests but also deter others from targeting our rural communities

Multi-agency approach to illegal waste-carrying and fly-tipping – in the last six months, five joint initiatives with the Wiltshire Council Enforcement Team and the Environment Agency have resulted in more than 50 vehicles being stopped and checked, three were seized and Wiltshire Council has prosecuted five people during this period. You can read about the latest case here where our officer's Body Worn Video secured the prosecution.

As we are a rural county, we know it is important for all our officers to be skilled to spot the signs and investigate rural crimes. This is why we have given officers across multiple departments within our organisation additional

training, including Scrap Metal Enforcement Training, Heritage Crime and Investigation Training, Wildlife Crime and Game Keeper Legislation and Land Management awareness.

This cascade of professional development has resulted in an increase in dedicated operations taking place – including visits to scrap yards in the county - but is also encouraging our officers to consider utilising all available powers to prevent further criminality. This includes utilising Community Behaviour Orders against criminals post-conviction, as successfully introduced elsewhere in the country.

I would encourage our communities to follow our social media channels and visit the Your Area section of our website to find out more about their Neighbourhood Policing Team and the action we have been carrying out in your area.

Finally, it is not only our operational and neighbourhood policing teams who have a responsibility to forge ever closer links with our rural communities – I expect our senior leaders to do this too.

On September 2, John Derryman, our Chief of Corporate Services and I, were delighted to accept the invitation from the Mayor of Malmesbury Councillor Stephen James to join him and others on part of the Athelstan 1100 - a guided pilgrimage walk from Malmesbury to Kingston upon Thames.

This fantastic event not only took in some glorious rural scenery, but it also gave us the opportunity to meet those who live and work in our more rural areas.

Thank you so much to everyone involved for making us feel so welcome.

Kindest regards to you,

Catherine Roper

Chief Constable, Wiltshire Police



Our latest missions

Find out where we have been carrying out our lifesaving work across Wiltshire, Bath and surrounding areas recently.

11 Sep 2025	Road traffic collision involving a car, joint mission with another air ambulance	✓
10 Sep 2025	Cardiac medical emergency incident	✓
10 Sep 2025	Road traffic collision involving a car, joint mission with another air ambulance, airlifted to hospital	✓
10 Sep 2025	Neurological/Epileptic medical incident	✓
10 Sep 2025	Respiratory medical incident	✓
09 Sep 2025	Cardiac medical emergency incident	✓
09 Sep 2025	Cardiac medical emergency incident	✓
08 Sep 2025	Other trauma injury	✓
08 Sep 2025	Cardiac medical emergency incident	✓
07 Sep 2025	Other trauma injury, land assisted to hospital	✓

Forthcoming events

Q's with the Crew

Wednesday 17 September 2025

Join us for this opportunity to ask all your burning Q's to our crew

Behind-the-Scenes Tour

Thursday 25 September 2025

Join the team on one of our behind-the-scenes tours of the charity's airbase.

Valuation Day

Saturday 27 September 2025

We're back with another Valuation Day, this time at our airbase!

Cabbage Sunday

Sunday 28 September 2025

Charity auction and fun day raising funds for Wiltshire and Bath Air Ambulance Charity

CycleFest @ Castle Combe

Sunday 05 October 2025

CycleFest returns for 2025! Gear up for a family friendly day of cycling fun.

Christmas Market Day

Thursday 20 November 2025

Join us for our popular Christmas Market at the airbase.

Salisbury City Hall Disco

Saturday 24 January 2026

Do you remember going to the city hall discos in the 70s, well now is your chance to come back and relive it a second time around and reunite with old friends.

Carols at Malmesbury Abbey



Wednesday 3
December 2025

Carols in the Abbey, Bath



Thursday 11
December 2025

Full details on all of these events can be found on the website.

<https://www.wiltshirebathairambulance.org.uk/>



Wiltshire Council

Latest news from the Council

Wiltshire's Air Quality Management Areas Achieve Compliance and a major milestone for public health and the environment

Published 11 September 2025

A report confirming the update was presented at the council's Environment Select Committee on 9 September.

Under the Environment Acts 1995 and 2021, the council has a legal duty to monitor air quality through the Local Air Quality Management framework. The council focuses primarily on nitrogen dioxide (NO₂), a pollutant commonly associated with traffic emissions.

Historically, breaches of the annual mean objective of 40µg/m³ led to the declaration of eight AQMAs in locations including:

- Bradford on Avon (Masons Lane)
- Marlborough (Herd Street/London Road)
- Calne (New Road/London Road)
- Westbury (Haynes Road/Warminster Road)
- Devizes (Brewery Corner)
- Salisbury (London Road/St Marks Roundabout, Wilton Road/St Pauls Roundabout, and Salisbury City Centre)

These areas, often characterised by narrow, canyon-like road layouts and heavy traffic, presented challenges for pollution dispersal. However, sustained efforts through the council's Air Quality Action Plan (AQAP), targeted monitoring, and community engagement have helped to deliver significant improvements.

Wiltshire Council's 2024 Annual Status Report, submitted to Defra in July, confirms that nitrogen dioxide levels have remained below the national objective in all AQMA for the first time. This paves the way for the

potential revocation of some AQMAs, over the next 12 months in line with Defra's technical guidance, which requires either three consecutive years of data 10% below the objective or five years below the threshold.

Cllr Paul Sample JP, Cabinet Member for Environment and Climate, said: Air pollution contributes to the equivalent of 30,000 deaths in the UK this year - according to the Royal College of Physicians.

No-one in Wiltshire wants to live in a County that has high levels of air pollution. This work is all about safeguarding and improving the health of residents - and future generations. I am delighted that the quality of air in our eight Air Quality Management Areas now meets the targets set. It is a big environmental and public health milestone. However, the hard work won't stop. Wiltshire Council are committed to gathering evidence to help us maintain and improve air quality.

Our Air Quality Annual Status Report has been sent to the Government. It summarises our efforts to reduce air pollution and improve air quality. It includes the launch of the Wiltshire Community Air Network. Our Air Quality Action Plan will make sure we stay on track in making Wiltshire a great place to breathe! We have also launched an air quality Supplementary Planning Document. This is expected to go forward for adoption by the new administration in October. Lots of positive work has taken place and there's much more to come as our focus shifts to tiny particles like PM_{2.5}.

This achievement aligns with Wiltshire Council's broader environmental priorities outlined in the new Council Plan, which emphasises protecting the environment for future generations and promoting healthier lives.

One of the key measures contained in the Air Quality Action Plan is the development of supplementary planning guidance as development within the county has





significant influence on the county's roads which are the primary source of nitrogen dioxide.

Supplementary Planning Guidance has been developed and will be considered by the council's Cabinet at its meeting in October, that will require developers to not solely focus on nitrogen dioxide levels within the eight AQMAs but also recognise increasing public concern about very fine particulates (PM2.5) and on electric vehicle infrastructure. The council's Wiltshire Community Air Network, which launched earlier in the year, has a particular focus on PM2.5.

For more information on Wiltshire's air quality initiatives, visit Wiltshire Council's Air Quality page at www.wiltshire.gov.uk/env-health-air-quality

Wiltshire Council shares first quarter budget monitoring and reaffirms commitment to sound financial planning

Published 10 September 2025

Wiltshire Council has published its first quarterly revenue and capital budget monitoring reports for the 2025/26 financial year, reaffirming its commitment to proactive financial management and the continued delivery of essential services across the county.

The net revenue budget for 2025/26, approved by Full Council, stands at £527.420 million, supporting vital services for residents, businesses, and communities, and enabling the council to meet the priorities outlined in its business plan. The budget also includes a savings target of more than £15 million.

As of the end of June 2025, the council is forecasting a net overspend of £6.510 million for year end - that is 1.2% of the council's net budget for this year. The report

highlights that this early-year variance will be managed within the financial year. Cost control measures introduced last year remain in place, and further mitigations are being implemented to ensure the council continues to deliver high-quality services and provide good value for money while operating within the budget.

The report acknowledges ongoing financial pressures, including continuing higher levels of inflation and changes to Employers National Insurance rates, introduced after this year's budget was set. While these are being effectively managed, the impact on Adult Social Care providers has led to increased service costs and a resulting overspend in the Adult Social Care budget.

Demand is rising in both adult and children's services driven by a combination of more people needing complex care and market constraints. Nevertheless, the council's preventative approach in adult social care has helped keep the number of people needing funded support steady, and the council expects that to continue through 2025/26.

Positive financial highlights include a £1.501 million operating surplus on the Housing Revenue Account (HRA), successful receipt of National Landscapes grant funding, and the strategic use of reserves to support initiatives in the arts and air quality.

The council is also investing in supported accommodation for care-experienced young people, reducing reliance on costly out-of-county placements. Cabinet will be asked to approve an earmarked reserve to fund temporary posts overseeing contract management and quality assurance in this area.

The council has also published its capital budget monitoring report, outlining progress on its capital programme for 2025/26. The revised capital budget now stands at £245.7m, down from £253.9m when the budget was set, reflecting adjustments made to align with project delivery timelines and funding changes.



As of 30 June 2025, £30.2 million has already been invested in key infrastructure and service improvements - approximately 12% of the capital programme.

Key investment highlights from the capital report include:

- £28.5 million of investment in schools and education facilities including £15m on Special Educational Needs and Disabilities facilities
- £44 million investment in the Council House build programme and refurbishment of homes
- In excess of £42 million of investment in highways and footpaths
- Nearly £10 million of continued investment in the A350 Chippenham Bypass
- £21 million in leisure provision

The Quarter One Revenue and Budget reports will be presented at the Cabinet meeting on 16 September.

New Wiltshire Connect bus service launches in the Warminster and Mere areas

Published 9 September 2025

Wiltshire Connect Launch - Warminster
Wiltshire Council has launched a brand-new bus service in the Warminster, Mere and surrounding south-west Wiltshire areas, helping to reduce isolation, improve access, and support sustainable travel across the region.

The new Wiltshire Connect services follow successful rollouts in both the Pewsey Vale and the Royal Wootton Bassett and Malmesbury areas, and serve the rural communities of south-west Wiltshire in the Warminster and Mere area. The new service also provides new connections to Frome in Somerset, and Shaftesbury and Gillingham in Dorset.

With seamless connections to rail services at Warminster, Gillingham, Tisbury

and Frome, plus new direct links to major attractions such as Stourhead, Longleat, Shearwater and Center Parcs, Wiltshire Connect is the perfect way to explore the area - and beyond.

The buses operate on an on-demand basis, which allows passengers to book a bus from a stop of their choosing in the service area to their destination at a time to suit them, either by booking through the Wiltshire Connect smartphone app or by phone.

The new service will replace the existing Mere Taxi-bus and bus routes 54 and 58 that currently run in the area. An improved timetabled service, Frome Bus 57/A, will also operate between Warminster, Mere and Gillingham from 1 September to complement Wiltshire Connect.

One of the fleet of three buses is fully electric, enabling comfortable, modern and zero emission travel throughout the south-west of the county. All the buses are fully accessible, with either low-floor access or passenger lifts and space for up to four wheelchair users.

The service has been such a huge success in the Pewsey Vale and Royal Wootton Bassett and Malmesbury areas and is connecting communities and reducing rural isolation across the county.

Booking a ride at a time to suit you is as easy as using the Wiltshire Connect app or calling our helpful team. We welcome all passengers and are proud to offer fully accessible buses, with step-free lift access and space for up to four wheelchair users on board.

Buses operate from 6am-8pm Monday to Friday, and 8am-7.30pm on Saturdays, but not on bank holidays.

For more information and to download the app, visit www.wiltshireconnect.co.uk or call 01225 712900.



News

Wiltshire Council launches recycling trial in Chippenham ahead of 2027 countywide rollout

Published 14 August 2025

Over 500 households in Chippenham will shortly receive a new red-lidded bin as Wiltshire Council trials a new way to recycle plastics and metal ahead of a rollout across the whole county in 2027.

The council is preparing to launch significant changes to its recycling services in 2027. This initiative supports Wiltshire's commitment to improving recycling rates and meeting legal requirements under the Environment Act 2021. The council has been planning a limited recycling trial to inform key decisions ahead of the full-service implementation for nearly a year.

To ensure a smooth transition, the council is conducting a targeted trial in Chippenham to test key operational aspects of the new service. Households selected as part of the trial will receive a letter in the week commencing 18 August. As part of the trial, residents will be asked to separate their recycling into four groups of materials, reflecting the changes planned for the countywide rollout in 2027. This will be done using a combination of existing containers (bins or reusable sacks) and new containers provided by the council. The four recycling groups are:

- Paper and cardboard
- Plastic, cartons and metals (plastic bottles, pots tubs and trays, cartons, tins and cans)
- Glass bottles and jars
- Plastic bags and wrapping (such as bread bags and clingfilm)

Food waste collections are not included in this

trial as the council does not currently have the specialist vehicles required to collect it separately from other recyclable materials. However, a separate food waste collection service will also be introduced in 2027.

The trial will run from September 2025 to February 2026. It will enable Wiltshire Council to:

- Ensure future recycling collection vehicles are suitable for the new service
- Review the communications to residents around the new service
- Assess household capacity for the new recycling containers

The selected trial area includes over 500 properties across the Chippenham Hardens & Central and Chippenham Sheldon divisions. This area was chosen for its variety of housing types, proximity to the local material recovery facility where recycling is sorted, and a slightly higher-than-average use of reusable recycling sacks (4.4% compared to the Wiltshire average of 3%). This makes it an ideal location to evaluate the practicalities of the new system. Residents who are taking part will be asked to fill in an online or paper survey to give their feedback and the council will also be holding focus groups to help understand areas that can be improved prior to rolling the new recycling approach out in 2027.

Residents will receive clear guidance on how to use the new containers and what materials go where. Participation in the trial will help the council understand how the new system works in practice and identify any improvements needed before the countywide rollout.

The council is legally required to implement changes to our recycling services by 2027. As part of this trial, we want to understand the views of our residents as we design the new service to ensure the transition is a success.

For more information about the trial, visit: [Wiltshire Household Recycling Trial](#)



Village Musings

One of the most wonderful things about living in this, the very best of villages, is that every evening we can be assured of extraordinarily beautiful sunsets. Whatever the season, whatever the weather, they catch us and hold us still for a moment as the day draws to an end.



Sometimes they are subdued, silver and pale and misty and thoughtful, sometimes stunningly vivid with colours and patterns that seem almost supernatural, that dance wildly across the sky. They cannot really be captured in their full glory by camera or paintbrush, but I love to hold onto the images I have, to look through them and enjoy them again as the darkness falls.



This is probably the last time we will have the privilege of writing in this newsletter as it is no longer going to be published - our thanks go to those involved in producing it over the years. Stephen and I have enjoyed contributing to the content each month. And thank you to everyone in Edington – this is the best place in the world to live and each person in the village makes that reality.



Mercedes Henning



Wildlife from my window at Edington – Part 3

Summer is drawing to a close and it is time to reflect on some of my best wildlife moments of the year through my window, in my garden and around and about our village.

I have been amazed at the huge number of ladybirds I have seen this year. I found one old apple tree covered by what looked like a number of different ladybird species. There were larvae, pupae as well as adults. They all appear to be the harlequin ladybird a non-native species that has become widespread in the UK, first arriving in the early 2000s. They are known for their variability in colour and spotting patterns, making them sometimes difficult to identify, but they are generally larger (>5.5 mm) than native UK ladybirds. They in fact have over 100 different colour pattern varieties



This summer we have seen huge numbers of ladybirds – I think these are mostly the variable Harlequin Ladybird as they were all on the same old apple tree



Pupae of the harlequin ladybird

On the village pond this year there have been three mallards – two males and a female. We hoped we would see them breeding on the pond as happened a few years ago when the female hatched out ten ducklings. However, there was no breeding on the pond this year. The three mallards have regularly visited the pond since about March and perhaps they are still young birds and not sexually mature yet. Mallard ducks typically reach sexual maturity and can start breeding at about one year old. Anyway, we have had fun watching the ducks on the pond from our decking.



The view of the three mallards on the village pond from our decking





There have also been a lot of dragonflies mating around the village pond this year. We have recorded both the large red damselfly and the common blue damselfly mating along the edge of the pond. We have also seen the broad-bodied Libellula and the emperor dragonfly around the pond. We dug our own small pond in our garden this summer and were delighted to see mating common blue damselflies on the plants around our pond. I hope we will be seeing their nymphs in the pond over the next few weeks and months.



The large red damselfly is common around Edington ponds.



Common blue damselflies were mating this year around the village pond.

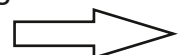


Broad-bodied Libellula were seen around the village pond



The emperor dragonfly UK's largest dragonfly is often found at the village pond and flying round our garden and I even had to catch one in our lounge that had come in through our window.

One of most interesting observations I made over the past summer was that of a pied wagtail flying just above the water at the edge of a lake catching common blue damselflies on the wing. My son-in-law managed to photograph it.





Pied wagtail catching a common blue damselfly over the water (photo P. Williams)

Another lovely moment was seeing a house sparrow fledgling pestering his father until he got fed.



Male house sparrow feeding his fledgling chick who looked bigger than him

In July 2025 I had another one of my most interesting wildlife adventures. One of my daughters had organised for me to go on a glow worm walk. for my Father's Day present. It was at Fisbury Ring a National Trust Neolithic and Iron Age site near Salisbury and

the walk started at 10 pm in the evening when it was dark enough to see the glowworms.

The glow-worm is a beetle, and the male looks just like a normal beetle and can fly. The female however does not have wings and produces the luminescence from two of her abdominal segments. Because she has no wings, she looks wormlike hence the name. The two abdominal segment and 2 small dots glow green in the dark. The females climb up plant stems and glows in order to attract males, who have large, photosensitive eyes - perfect for scanning vegetation at night. The males can fly and are attracted to the females. The adults only live for a few days and don't feed. The larvae live for 2-3 years as predators and feed on slugs and snails. They live under rocks or are hidden deep in grassy tussocks. The larvae can also emit light, and so can the eggs. Adults are only around for a short period in June and July.

We had a guide who took us round the site. He told us what to look for – a small bright green light in the grass. It looked absolutely amazing, and we quickly got our eye in and started to see many more. Our guide asked the group to count the number of glow-worms we saw as we walked round the site and keep a tally. We recorded 69 glow-worms.



A wingless Glowworm female emitting light to attract a winged male





Also, in July 2025 one of my daughters found a baby hedgehog in her garden in Great Cheverell. There was no sign of any parents around and eventually she took it in as it looked distressed. She fed it milk which it took eagerly as it was obviously very hungry. She took it to the Wiltshire Wildlife Hospital in Amesbury. They told her when it has grown big enough to fend for itself, they will return it to her to be released where she found it.



Abandoned baby hedgehog found in a local garden

Another mammal that has just come to my notice is the water shrew. In August 2025 I found one dead in my garden, and it presumably was living in the village pond just next door to my house. They are not in fact confined to water but can often be found in damp environments feeding on worms, insect larvae and spiders. But they are more at home near water where they dig shallow burrows to live in, normally by themselves. These burrows can also have an underwater entrance. They readily take to the water and hunt prey such as fish, tadpoles and quite large frogs. They have two or three litters a year containing three to eight young, from May onwards. Although they may live for up to 18 months, they mostly die young or are taken by predators such as owls, cats and pike in the water.



I found a dead water shrew in our garden – it probably died of old age as it had no visible injuries

Another interesting mammal observation was that of a mole scuttling across the B3098. There was no obvious reason why a subterranean mammal would want to, or need to, cross a busy tarred road in broad daylight. I have been observing and studying animals since 1956 when at 7 years old I was a junior member of the Witwatersrand Bird Club in South Africa and am still mystified at some of the antics animal get up to. In this case it is probably a young mole recently ejected from his mother's burrow looking for a new home. They also come to the surface to look for food when the soil is dry which has certainly been the case over the past few months.



We saw a mole scuttling across the B3098 (del. S.F. Henning)





On the hills above Edington the butterflies have also had a good year. On several visits Mercedes and I have recorded Adonis blues, small heaths, walls, meadow browns, small coppers, brown argus, gatekeepers (also known as hedge browns) in addition to the normal butterflies recorded in our gardens. The walks over the hills are amazing and over the years we have recorded a huge number of butterfly and other species. One of the most interesting was finding a labyrinth funnel spider that had captured several Adonis blue butterflies and stored them in his web.



A pair of Adonis blues



Labyrinth funnel spider with a male Adonis blue butterfly it had captured



Female Adonis Blue



The Labyrinth funnel spider's larder of Adonis blues



Small blue





Small copper



Common blue female



Chalkhill blues were once common on the northern slopes of Salisbury Plain above City Hollow, but I have not seen recently



Brown argus



Common blue male



Dingy skipper





Silver-spotted skipper



A frog sitting on the edge of my pond (photo C. Henning-Marsh)

I must mention one last animal that gave me a moment of joy back in August. As we were leaving our front door, there was a frog sitting on the edge of one of our ponds. My daughter-in-law photographed it. What a wonderful summer we have just had.

It has been fun recording the wildlife that I have seen from my window and in the countryside around Edington over the past few months and years. It has been an abiding passion all my life.

Stephen Henning



Four Villages Link

Over a 3-month period the Link Coordinators organised 137 appointments, most of which involved driving clients to hospitals etc, with some 2500 miles driven by our volunteer drivers. Our volunteers will also assist with other requests such as shopping or help around the home. We are always looking for more volunteers; do contact the Coordinators on 07852 256939 if you would like more information, or view the website: <https://thefourvillageslink.org.uk/>. There is no charge for services, although donations are welcome, and volunteers are paid for mileage.

In conjunction with Bratton Jubilee Hall, Four Villages Link would like to invite all clients to afternoon tea in the hall, from 2-4pm on Wednesday 5th November. Please contact the Coordinator if you would like to attend and we will organise a driver for you.

Jubilee Players Bratton: Children needed for the pantomime!



What is a pantomime without kids? If you're between 8-12 and would like to take part in "Jack and the Beanstalk" please contact Cathy on 07592 294903. You get to be a villager, a sprite and a cockroach! No experience required, just enthusiasm.

The first meeting will be 2pm Sunday 5th October - come along to the Jubilee Hall.

Performances are 20-22 November.



Edington & District Gardening Club

First Thursday in the month Parish Hall
7.00pm

What a wonderful display of produce and craft in the Parish Hall for this year's Flower & Produce Show. Despite such a hot summer and challenging weather, we had a fantastic array of produce to show off, together with photos, (the most ever!), and art and crafts. It amazes me how each year different produce and flowers come to the fore.

Thank you to all those who entered and those who helped in any way, including offers of cake and muscle power for the marquee and trestles, the committee, stewards and independent judges. Everything came together, making it a very successful day.

The results are shown separately.

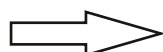
Our next meeting will see us back in the Parish Hall on Thursday 2nd October, doors open at 7.00pm. we have a change of speaker to the programme. Millie Carmichael will speak on 'Bring back no dig for Victory'. It is focused on vegetables and allotments but is also looking at the reasons no dig can be so beneficial for soil life in any sort of gardening.

Visitors are very welcome to come along and join us.

On behalf of the Gardening Club, I would like to thank Wendy and John Pollard for their support to our group. John was Treasurer for several years and Wendy was a tremendous asset in the Kitchen. We wish them well on their next adventure, they will be missed in the village.

Jacky

(Further details on 01380 830133)



Let's Move! Dance Fitness

Low Impact Dance Fitness

Edington Parish Hall
Tuesdays 10-10:45am

A low impact class suitable for beginners, seniors and those looking to get moving and become more active.
No prior dance experience needed.
Take it at your own pace, have fun and meet new people.

£5
Pay as
you go

GET IN TOUCH
Whatsapp or text Ellen Wilkinson
07925 051525
letsmovedancefit@outlook.com
Facebook @Letsmovedancefitness



FRIENDS OF COURTYARD SURGERY

The Chair and Committee of Friends of Courtyard Surgery would like to thank all the contributors to our Open Day with art exhibition as well as the visitors, patients and staff. A very successful day, the event raised £220 for the charity from donations for the tea, coffee and cakes.

Thank You



Edington & District Gardening Club Flower & Produce Show 6th September 2025 FULL RESULTS

A - Flowers & Pot Plants

1 st	Mercedes Henning 29
2 nd	Liz Pike 24
3 rd	Sarah Killian 7

B - Floral Art

1 st	Mercedes Henning 16
2 nd	Derryn Henning 6
3 rd	-

C - Fruit

1 st	Liz Pike 13
2 nd	John Giffor 8
3 rd	Mercedes Henning 12 Edward Callaway 12

D - Vegetables

1 st	Jane Drake 14
1 st	Edward Callaway 14
3 rd	Seannan Henning 13 Mercedes Henning 13

E - Miscellaneous

1 st	All the first winners in the classes Edward Callaway Gwynnifer Henning Martin Killian Sarah Killian
-----------------	---

F - Cakes & Preserves

1 st	Liz Pike 14
2 nd	Cathie Dowlem 11
3 rd	Anne Tottingham 8

G - Handicrafts

1 st	Gwynnifer Henning 9
2 nd	Cathie Dowlem 8
3 rd	Suzanne Wickham 7

H - Art & Photography

1 st	Patrick Williams 10
2 nd	Derryn Henning 7
2 nd	Stephen Henning 7

I - Children's Classes

1 st	Thula Wilkie 14, = 2 nd Violet Verlinde 12 = 2 nd Alma-Ayre Wilkie
-----------------	--

Best in Show: Suzanne Wickham (Tapestry)

Best Gross Score: 1st Mercedes Henning 65 ,2nd Liz Pike 57, = 3rd Cathie Dowlem and Edward Callaway

Silver Salver Winner: (10 best nominated entries by exhibitor)

1st Mercedes Henning 30, = 2nd Gwynnifer Henning and Edward Callaway

Children's Cup: Thula Wilkie

Youth Award, 16 and under: Alma-Ayre Wilkie

Village Rose Shield Award: 'Peace & Harmony'

1st Edington & Tinhead WI 52, 2nd Edington & District Gardening Club 51

Judges Special Mentions:

Stephen Henning's painting, Patrick William's dog photo, Edward Callaway's dahlias,

Karen Wight's Handicraft item, Thulo Wilkie's origami sunset/rainbow

Handicraft judge, a good variety, the quality and standard were very good indeed and all should be proud of their work.

WELL DONE! EVERYONE - SEE YOU NEXT YEAR!



Erlestoke and Coulston Cricket Club

And just like that, Summer makes way for Autumn as the leaves around the Walled Garden begin to change and the temperature starts to drop. It has been a scorcher of a season, and the weather has had a huge impact on the ground and general playing conditions, but there has been plenty of good cricket to celebrate and the club has made great strides again in securing its future for seasons to come. The 2025 League Season came to an end under expansive damp and rainy skies across Wiltshire last Saturday. Finishing on 230 points and 6th in the league, we secured another season in Division 2 for the 2026 season which ultimately was our goal when we started the year. However, there is still a sense of what could have been as there were plenty of occasions and games this year where we found ourselves in strong winning positions but just weren't able to get over the line. Is this down to inexperience? Bad luck? Or just a case for deepening the strength and quality of our squad? All questions to reflect on over the winter and find answers to as we get ready for next season. But there are plenty of positives to take from 2025 and we must always remember these when assessing the season. Our first overseas player Cooper Webster was a great addition to the side and it was a shame that he was not able to see out the summer with us. Scoring 260 runs and taking 11 wickets in his 6 games makes us think of what could have been if he had stayed for the whole season - he probably would have

ended up being one of the top run scorers and wicket takers in the league. Lauren Shrubsole showed her skills and worth in her first season with us taking 23 wickets and providing much needed stability in the tail. Joe Moloney was warmly welcomed back into the side this year after a winter in Australia and his 277 runs across the season included some fantastic counter attacking batting that showed off all his cricketing skills. The Dorgan brothers both ended the season with over 400 runs each, with Joe also taking 23 wickets and Toby 13. Theo Dodds grew in confidence behind the stumps and showed his potential this year with his keeping and ball striking. There is a simmering excitement as to what our Saturday team might be able to produce when availability is good and we hope that 2026 will be the season when it all clicks together.

The midweek side finished with a win at Home to Horningsham which was a great way to wrap up their season. Under the great leadership of Matt Grist, the side has been popular throughout the year and has been a great way for our new members to be introduced to the club. Unlike the other 2 sides, the Sunday XI have not hung up the whites just yet and have 3 more fixtures before their season ends. However, the season so far has proved enjoyable for all involved. Its been clear to see the struggles other sides have had this year and the future of Sunday cricket remains a concern as teams we play seem to be finding it increasingly harder to find sides. We will continue to review this over the winter and ensure that come the summer in 2026, we have a suitable fixture list for our Sunday XI to enjoy that provides good enjoyable cricket for all abilities and experiences. As always, we can't thank all our



captains enough for the hard work and time they've put in to ensure we have full sides for each game and that everyone walks away having enjoyed themselves. We hope they have a good winters rest and will be looking forward to the new challenges of the 2026 season.

However, it's not only the captains that have been working hard this year to get games on! It's clear from this year's stats that the 2025 season has not been the kindest to groundsman everywhere, with the long dry summer proving particularly difficult to produce pitches up to the usual mark. We can't thank our own resident Groundsman Patrick enough for all the hard work and toil he has put in this year to get the ground ready, even when the weather was against him and was more inclined to produce barren deserts! The ground has never looked as brown as it has this year and the rain this weekend has come all too late for groundsmen across the county.

So, with the seasons venture coming to its natural end, it seems fitting therefore that a new one begins. At the start of September, after years of planning, fundraising and waiting, the walls of the new pavilion were finally delivered to the ground thanks to some excellent driving from the delivery driver. In the



space of 5 days these were up and the roof trusses ready to be installed. By the end of the month, we could have the finished frame up ready for the roof shingles to go on. This is such an exciting time for the club and hopefully one that will only go towards attracting new players and members to the club for the coming seasons. Our thanks go to all the



club's members who have made themselves available over the past few weeks to help with getting things underway and being on hand to do the general dogsbody work. It wouldn't have happened without you.



We hope that this new pavilion will in time become a central part of the club and the community and provide a fantastic place for people to come and play, relax and watch some cricket at a very special ground. As we



all settle in for a winters rest, a few of us will be keeping our skills in check with the indoor cricket league and enjoying the chance to stay active over the long cold months. There will also be the annual Bonfire and Fireworks evening in November for which details will be circulated in the coming months.



Joe Dorgan
ECCC Chairman



Coffee Morning Drop In

Every Tuesday

10.30 -11.30 am

in the Three Dagers.

Transport available contact

Pauline or Joy.

Forthcoming road closures

5th October B3098 near White Horse Viewing Area - road closure 09.30 - 15.30
Utility Repair and Maintenance Works

7th October B3098 between Monastery Road and Greater Lane - Road Closure
Repair cover and associated works.

23rd October Greater Lane junction with Greatwoods - Road Closure
Section 81/Defect - Repair/Replace Cover & Frame

At present there would appear to be no other road closures planned, but this can change at short notice.

You can find out about roadworks across Wiltshire by going to <https://one.network/>

Four Villages Link

If you need a lift to hospital, doctors or other appointments, please call our coordinators on 0785 25 6939. There is no charge for services but donations are gratefully received. We always welcome new volunteers, so if you have some time to spare, please call the same number or contact us via the website:

<https://thefourvillageslink.org.uk/>

Several of our volunteers are very happy to do small jobs around the house or garden; please don't hesitate to call if you would like some help.



WHITE HORSE NEWS

As you may have noticed the White Horse News is no longer delivered to properties in Edington, however we have been in contact with the publishers and they are happy for the Edington Village News to fill the gap and with their permission we will now be publishing extracts from their newsletter in our publication every month.

You can always read the full online edition at :- www.whitehorsenews.co.uk

Residents meet MP over ongoing Bratton Road safety concerns



Residents of Bratton Road have met with MP Andrew Murrison to raise concerns about a pavement widening and priority give-way scheme, which they say has worsened traffic safety and caused disruption for those living along the road.

The scheme, introduced by Wiltshire Council includes a widened footway, narrowing the carriageway to one vehicle width with vehicles approaching from Bratton direction required to give-way to any vehicles already in the narrow section

The scheme has previously drawn complaints from residents who say it has made

it harder to enter and exit driveways, increased congestion, and created tension between motorists using the narrow sections of the road.

Andrew Murrison praised the turnout of residents at the meeting on Friday 5th September. "I'm really impressed by the number of people who've turned out today to talk about what is clearly a very important issue on Bratton Road," he said. "I'm unhappy that the council hasn't consulted with residents before they put in this pavement widening scheme. I'd like them now to go away and work with you and come back with proposals on how they can mitigate the problems that have obviously arisen as a result of this.

[Read more about this story here](#)

Westbury firefighters rescue dog trapped in pipe



Firefighters from Westbury Fire Station were called to assist on Wednesday 3rd September after the dog, named Ruby, crawled into an open drainage pipe in the village of Upton Lovell and got stuck.

The incident saw the firefighters work alongside Wiltshire Council Highways teams and their contractors, M Group, to free her.

Council crews dug through the verge and into the pipe, while firefighters provided support and coordination. After around three hours, Ruby was safely reunited – muddy but unharmed – with her owner.





Firefighter Nathan Collins, who led the rescue, said, "We're really pleased that Ruby is now out of harm's way, so a big 'thank you' to everyone who helped to free her. Sometimes we need the support of other agencies for the incidents we attend, and the swift arrival of the team from Wiltshire Council Highways and their partners meant we were able to get Ruby back into the safe keeping of her owner."

Council teams are expected to return to the site to repair the pipe and verge.

Pharmacy access in Westbury branded 'ridiculous'



A new report has highlighted Westbury's lack of adequate pharmacy provision, a situation councillors have called 'ridiculous.'

The draft Pharmaceutical Needs Assessment (PNA), produced by Wiltshire Council's Health and Wellbeing Board, shows Westbury is the only town in Wiltshire without a pharmacy open on Saturdays and with no pharmacies opening before 9am on weekdays.

At a recent meeting of Westbury Town Council's policy and resources committee, councillors raised concerns about the impact on working residents. Councillor Gordon King said, "A lot of people in Westbury work and many of them travel out of town to their jobs. By the time they come home, they can't get to the pharmacy as they are closed. This is a big issue."

Councillor Mike Sutton added, "It is ridiculous that in the 21st century, we are

seeing para-1930s social hours. Back then, people had time to pop out from work and go to the pharmacy. Things have changed."

The PNA, which closed for consultation on 15th August, is intended to identify gaps in pharmacy services and signal to providers where improvements could be made. According to the draft, 59% of Westbury respondents said they were unable to access a pharmacy when needed, the highest proportion in the county.

Cllr Clare Cape, Wiltshire Council Cabinet Member for Public Health and Co-ordination with the NHS, said the draft PNA aims to guide new pharmacy provision.

She said, "Westbury had the highest proportion of people responding of any community area saying that they were not able to access a pharmacy as and when they needed to (59%); and this correlates with the fact that the community area is the only one without any pharmacy open on Saturday.

"This represents a barrier to sufficient choice in that locality on Saturdays, particularly for those households that do not have access to a car, and as such providing pharmacy provision on Saturdays in Westbury would represent an improvement in access.

"The aim of the PNA is to signal to the market any potential gaps, to support the NHS in their decision-making responsibilities on permitting new pharmacies to open and to support those within the NHS and public health with their work on commissioning relevant local services.

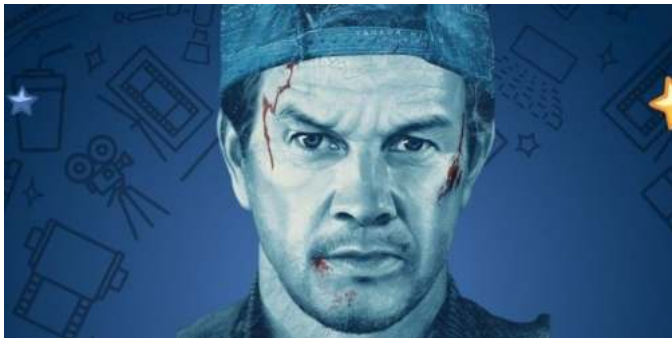
"Identifying in the PNA the potential to improve access to pharmacy services in Westbury is intended to stimulate applications from the providers to address this gap and provide clear grounds to the NHS for approving any such applications with the associated funding."

The draft PNA was out for consultation until 15th August and will now be amended in light of feedback before being considered for adoption by the Wiltshire Health and Wellbeing Board on 25th September.





Westbury Community Cinema to show Flight Risk



THE next film to be shown at the Westbury Community Cinema will be Flight Risk.

The film is directed by Mel Gibson, and stars Mark Wahlberg.

Flight Risk follows a pilot who transports an air marshal accompanying a fugitive to trial. As they cross the Alaskan wilderness, tensions soar and trust is tested, as not everyone on board is who they seem.

The screening will take place at The Laverton on Friday 26th September. Doors open at 7pm. For more information, call 01373 822126 or visit www.ticketsource.co.uk/westburycommunitycinema

Tower tours at All Saints' Church



Residents are being invited to enjoy views across Westbury next weekend as All Saints' Church opens its tower for special guided tours.

The tours will take place on Saturday 20th September, between 1pm and 4pm.

Visitors will be able to climb the 106 steps to the rooftop of the tower of All Saints' Church and enjoy views over Westbury to the White Horse.

Members of the bell ringing team will be on hand to talk about the eight bells that hang in the tower, which is the third heaviest peal in the world. There will also be an opportunity to view the workings of a 17th century chiming clock.

Entry to the tower will be £4.50 per adult and £1 per child. Doors open at 12.45pm and the last tour is at 3.45pm. All proceeds will go towards the work of the church and the upkeep of the Grade I listed building.

More details can be found on the church website www.achurchnearyou.com/All-Saints-Westbury

Books, vinyl and more at Zardoz Bookfair and Open Day



Westbury's long-running book dealership, Zardoz Books & Records, is hosting an Open Day and Bookfair on Sunday 5th October from 11am to 4pm at its Mill Lane unit in Hawkeridge.

The event promises something for every collector and enthusiast, with thousands of £1 books, vinyl LPs, CDs, DVDs and Blu-rays, plus a wide range of music and TV memorabilia, posters, artwork and collectible toys





Zardoz has been a well-known name in the world of vintage paperbacks for over 30 years, specialising in science fiction, mystery and classic Penguin and Pan editions. But since moving into their spacious new unit last year, the team has expanded their stock to include music, movies and pop culture treasures.

“We had over 100 visitors at our last fair,” said owner Maurice Flanagan. “This time, we have far more stock and an even greater variety.

“We have operated as Zardoz Books for over 30 years, initially with vintage paperbacks via mail order from our Westbury warehouse and then via our own website as well as Amazon, ABE, Biblio and Alibris.

“But since moving into our new unit, we have branched out considerably into music, movie media, artwork and toys. In addition to direct sales from our unit, we also now sell using Discogs, eBay and the occasional fair which gives people the chance to come along and see what we’ve got on offer

[Read more about this story here](#)

WORLD’S BIGGEST COFFEE MORNING



Edington & Tinhead W.I. will be hosting this year’s Macmillan Coffee Morning on **Saturday**

September 27th at The Parish Hall from 10.00 until midday. Last year’s event raised over £500 for this cause, which touches so many of our lives. Please come and join us, relax, catch up with friends and neighbours and see if we can do the same again.

WORLD’S BIGGEST
COFFEE
MORNING

Fundraising for
MACMILLAN
CANCER SUPPORT



HALL FOR HIRE

EDINGTON PARISH HALL

PARTIES - MEETINGS - PRIVATE FUNCTIONS

Nearby private carpark

For more information and to book online go to
www.e-ph.edingtonwiltshire.org.uk
or email parishhall@edingtonwiltshire.org.uk





Edington Parish Council SID says - August 2025

Our 2 SID devices sensed a combined total of 80,452 vehicles passing along the B3098 in August, about 40,000 each. The SID at the western end of the village showed that 59% of sensed vehicles were exceeding 30mph, whilst for the SID at the Three Daggers pub it was 64%.

If we look at just those who were exceeding 35mph (in recognition that these are the drivers who probably really don't care about the speed limit rather than just making a mistake in slightly exceeding 30mph), both SIDs recorded that about 21% of traffic was exceeding 35mph (16,616 vehicles combined total). The combined statistics for both SIDs are illustrated in the pie chart.

The maximum speed recorded in August was 69.1mph by the SID at the B3098 western location approach from Bratton on the afternoon of Sunday 10th at 3:49:51pm.

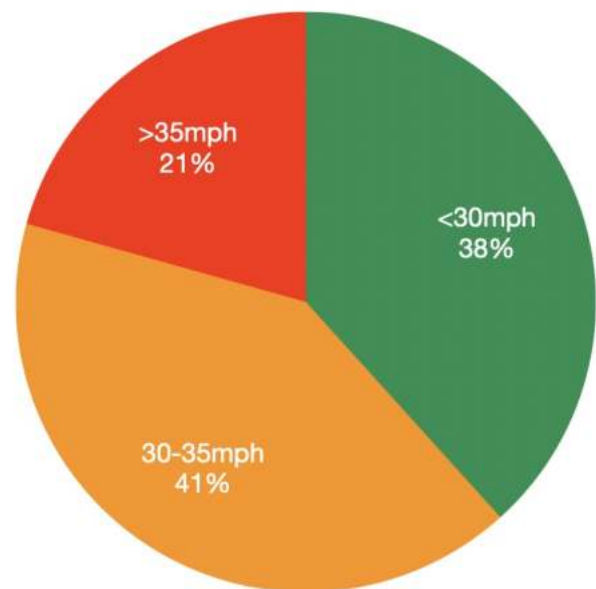
The new SID by the Three Daggers pub has been slightly troublesome in that it has no solar power unit at that location, and the batteries seem not to last as long as advertised. So, we missed 5 days of operation by the time it was noticed that they had gone flat and were removed and recharged. The batteries are supposed to last for 90,000 vehicle events but seem to run out after only 20,000 or so. The manufacturer says that this might be due to the new SID's improved longer-range radar sensor taking more charge than previously designed for, and so they are trying to help by seeing if they can provide advice on detection settings. In the meantime, I'll just have to charge the batteries more often than hoped for so, if you see me walking up the road more often with my stepladder and batteries, then that's the reason!

Wiltshire Council are due to install our additional 2 SID mounting posts on Lower Road and Tinhead Road in the next few weeks

we hope. Once in place, this will allow me to cycle our SIDs to monitor speeds on these 2 rat-runs in addition to the B3098. I usually plan to leave each SID in the same location for a couple of months so that we can get some consolidated speed data at each location for use in our discussions with Wiltshire Council about speeding in the village.

Steve Forward

SID Speed Data
Combined West & Central B3098 - August 2025



Coffee Morning Drop In

Every Tuesday

10.30 -11.30 am

in the Three Daggers.

Transport available contact

Pauline or Joy.



Salisbury Plain Training Area (SPTA) firing times: August 2025

The Headquarters of Salisbury Plain Training Area now has a Facebook page and a Twitter account.

Facebook - <https://www.facebook.com/HQSalisburyPlainTrainingArea/>

Twitter account [@HQSPTA](https://twitter.com/HQSPTA)

Monthly firing calendar for September 2025 (subject to late changes)

Red flags may be left up during non-live firing times for public safety due to large exercises taking place. All flags and signs are to be adhered to regardless of advertised times.

Live firing days on Warminster fixed firing ranges: 15-18, 22-30 September.

Live firing days on Imber ranges, areas 1, 2, 3, 4 (East of Warminster): 30 September

Information about October firing times should be available in the near future at the link further down this page.

Range opening times for the dates above (Subject to short notice changes)

Monday: 9am - 5.00pm

Tuesday: 9am - 11.30pm

Wednesday: 9am - 5.00pm

Thursday: 9am - 11.30pm

Friday: 9am - 5.00pm

Saturday: 9am - 11.30pm

Sunday: 9am - 1.00pm

The flying of red flags

It is well known that on SPTA, the flying of red flags is to inform the general public, as well as military range users, that live firing is taking place. On occasions, it is pertinent for flags to remain flying for major military exercises, even during periods where no live firing is taking place, to ensure no encroachment and the safety of the general public. During busy periods of activity, the Plain can be filled with large amounts of fast moving heavy armour that can appear from wood blocks and tracks with little or no warning. For this reason, red flags are to be adhered to at all times, even when their display does not match up with live firing times that are published on the Government website and this newsletter. Red flags are never left up in error.

We encourage estate users to report illegal activity. Call 999 for emergencies, but for other suspected illegal activity on Salisbury Plain Training Area, contact the Ministry of Defence Police on 01371 854444. A detachment is permanently based on Salisbury Plain and will respond.

This information is published under the Open Government Licence for public sector information.

Full details of this information can be found at :-

<https://www.gov.uk/government/publications/salisbury-plain-training-area-spta-newsletter>



THREE VILLAGES MINIBUS (TVM)



Destination	September	Start Time
Warminster	Tuesday 16th	1.25pm
Westbury	Every Thursday	1.25pm
Destination	October	Start Time
Devizes	Thursday 2nd	9.00am
Salisbury	Saturday 11th	9.30am
Warminster	Tuesday 21st	1.25pm
Westbury	Every Thursday	1.25pm

All these journeys accept concessionary passes and will return you to your door.

These trips are open to **all** residents of our villages; we welcome everyone, of any age.

Please book your seat with Pauline.

TVM is also available for village groups to hire (contact Pauline on tel:830013).

The next lunch will be on Wednesday October 8th.

Joy Fraser (830426)

October Village Lunch

We are holding a Two Course Lunch



(with a choice of Mains & a selection of puddings)

on

**Wednesday October 8th at
12.30pm.**

in the Parish Hall, Edington.

**Price £8.00 in aid of
Dorothy House**

All will be most welcome to join us.

Please book with

Pauline by

October 3rd



TVM will provide door to door transport.





Edington What's On Diary

Date	Time	Event	Venue
September			©Edington Newsletter
16th September	1.20pm	Warminster Shopping	
27th September	10.00am- 12noon	World's Biggest Coffee Morning	Parish Hall
October			©Edington Newsletter
2nd October	9.00am	Devizes Shopping	
2nd October	7.00pm	Gardening Club Talk	Parish Hall
8th October	12.30pm	Village Lunch	Parish Hall
11th October	9.30am	Salisbury Shopping	
21st October	1.20pm	Warminster Shopping	
Weekly			©Edington Newsletter
Every Monday	11.00am	Tai Chi	Parish Hall
Every Tuesday	10.00am	Let's Move Dance Fitness	Parish Hall
Every Thursday	1.25pm	Westbury Shopping Trip	
Every Friday	10.30am	Yoga	Parish Hall
Every Friday	6.00pm	Edington Brass	Parish Hall
<i>TVM trips - please Contact Pauline or Joy Fraser to book a place</i>			

©Edington Newsletter

The End