



## Contents



- White Horse Health Centre
- Courtyard Surgery
- Wiltshire Police
- Dorset and Wiltshire Fire and Rescue
- Wiltshire and Bath Air Ambulance
- Wiltshire Council News
- Village Musings
- Edington and District Gardening Club
- Forthcoming Roadworks
- Wildlife of Lundy Island - part 2
- Local Photographer - Winter in Edington
- Charity Card Sale
- Edington and Tinhead WI
- Imber Open Days
- Advent and Christmas at Edington Priory
- The Postie's Retirement
- Keevil School Newsletter
- What's On in Great Cheverell
- Edington Parish Hall
- Christmas Quiz
- Recipe of the Month - Festive Spiced Red Cabbage
- White Horse News
- Three Village's Minibus
- January Lunch in the Parish Hall
- Edington What's On Diary
- Sharing your newsletter
- Contacting us



# A Merry Christmas and Happy New Year 2025



Welcome to the fifty-fifth edition of the Edington Village News produced by villagers for the village of Edington.

This month we have another bumper edition of 28 pages and within them a number of new regular articles plus our regular articles and just for this month a Christmas Quiz.

**Deadline for articles 10th of the month**



Edington Village News is an independent publication and its content is not influenced by the Parish Council nor any other organisation. Opinions expressed or implied in this publication are not necessarily those of the editors and no responsibility can be accepted for any errors of fact printed in this publication. ©Edington Newsletter





# Edington Village News

ISSUE - 55  
DECEMBER  
2024



## Local surgeries latest



White Horse Health Centre and Bratton Surgery

Westbury surgery TELEPHONE 01373 828330  
Bratton Surgery TELEPHONE 01380 831911  
For medical emergencies dial 999

Bratton surgery and dispensary will be closed from 12:30pm on Tuesday 17th December for practice training. We re-open as usual on from 8:30am on Wednesday morning.

## Dr Edwards & Partners

[westburygp.co.uk](http://westburygp.co.uk)



Courtyard Surgery, West Lavington

Telephone 01380 813 300  
For medical emergencies dial 999

[Latest surgery newsletter can be found here.](#)

<https://www.courtyardsurgery.co.uk/>



## Wiltshire Police



Specialist Operations at @wiltshirepolice

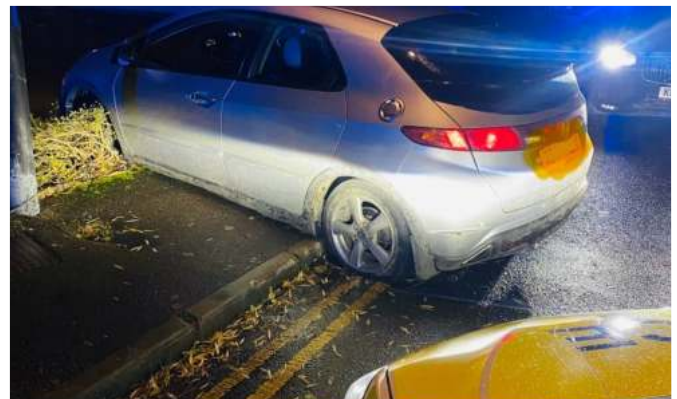
Wilts Specialist Ops @WiltsSpecOps  
Some recent "encounters"



This motor trader was moving three vehicles down the M4 earlier in convoy, with not a single insurance policy between them.

Three seizures from one stop.

#RPU (Roads Policing Unit) #ARV (Armed Response Vehicle) @wiltspolicedogs and response from Devizes and Trowbridge all working to a plan to get a confirmed cloned civic stung and stopped with 2 arrested for 2 overnight burglaries





## Homeowners are reminded to keep their homes Secure This Christmas

Published: 09/12/2024

**As part of Wiltshire Police's Secure This Christmas campaign, homeowners are urged to protect and secure their homes against opportunist criminals over the festive period.**

In December 2023, 53 families in Wiltshire were victims of burglary. To prevent anyone else from being a victim of burglary this Christmas period, detectives are encouraging homeowners to check their homes are as secure as possible.

Detective Inspector Sarah Champion explains: "Burglaries that take place around the Christmas period in Wiltshire are predominantly opportunist, with criminals often using rear patio doors to gain access to the property. We advise members of the public to ensure their back garden and entrances to their home are as secure as possible, locking and bolting garden gates, removing garden ornaments which can be used to smash windows, storing bins away from fences and gates, and investing in CCTV systems which cover all angles of the property."

Other tips to prevent your home from being burgled include:

- Always securing windows and doors, even when you are inside your home
- Using timer lights and television simulators
- Installing external motion sensor lighting
- Defensive planting of spiky shrubs and keeping hedges low
- Marking valuables using property marking DNA kits, and registering them on

[immobilise.com](https://www.immobilise.com)



- Avoiding oversharing information on social media when the property is empty

- Hiding Christmas presents from under a visible Christmas tree or on the back seats of cars
- Keeping expensive goods packaging hidden out of view and not on top of recycling bins
- Blocking high value vehicles in on driveways



Homeowners that are planning on going on holiday or visiting family and friends this Christmas are urged to review their home security and ensure measures are put in place to deter opportunist criminals. This can include parking a neighbour's car on the driveway, avoiding location sharing on social media, and using internal timer lights.

DI Champion continues: "Being burgled at Christmas can cause devastating impacts on victims. We do not want anyone to be a victim of burglary this Christmas period, and we hope by sharing crime prevention advice in the lead-up to Christmas that homeowners will be vigilant and take any necessary precautions to protect their homes."

Officers will be increasing patrols of hotspot locations and residential areas across Wiltshire during the Christmas period. Please continue to monitor official Wiltshire Police social media accounts to find out about upcoming pop-up crime prevention engagement events across the county.

More advice about home security products can be found on the [Secured By Design](https://www.securedbydesign.co.uk) website, which is police approved. Watch our 'Wiltshire Pads' series, due to be released on the Wiltshire Police Facebook, Instagram, and YouTube pages between 9 – 22 December, to learn more about home security and burglary prevention.

Wiltshire Police encourage members of the public to report any suspicious activity by calling 101. Always call 999 if a crime is in progress, or in an emergency.





# Edington Village News

ISSUE - 55  
DECEMBER  
2024



DORSET & WILTSHIRE  
FIRE AND RESCUE

Leaving small electrical devices on charge overnight has been the cause of multiple house fires in recent years, so Dorset & Wiltshire Fire and Rescue Service is urging people to 'Unplug to Unwind'.

Only large appliances such as fridges are designed to be left switched on all the time, so ensuring that everything else is unplugged before you go to bed is a simple routine that could protect your home from fire.

To help reduce the risk of a fire in your home, take these simple steps:

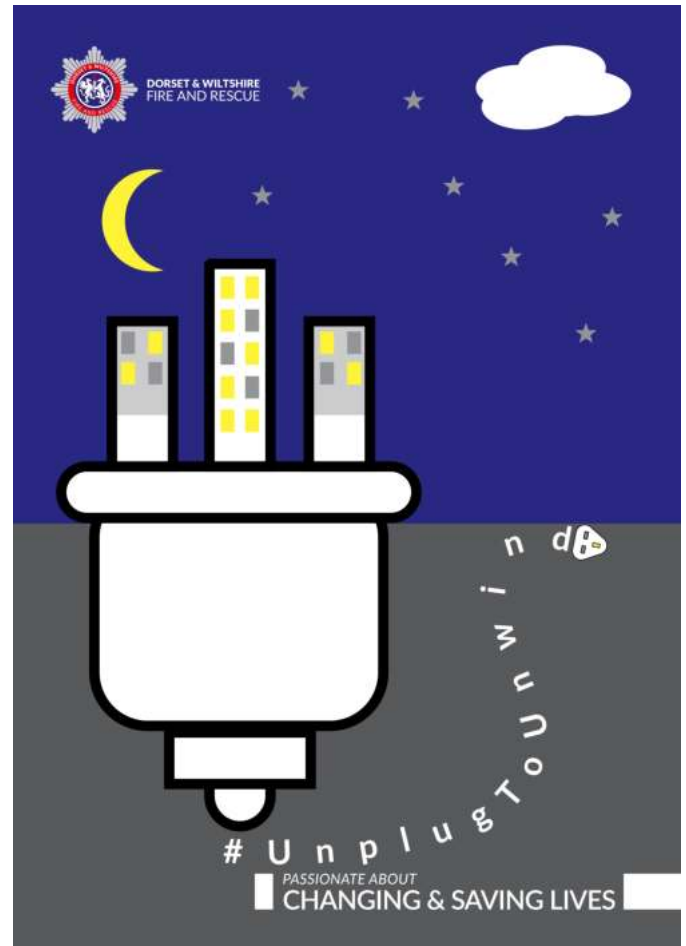
- Make sure an electrical appliance has a British or European safety mark when you buy it.
- Remember – one plug per socket. If you need more plugs than there are sockets, use a multi-socket extension lead with integral fuse, never a block adaptor.
- NEVER 'daisy-chain' extension leads or adapters – daisy-chaining involves plugging one extension into another in order to reach further or plug more appliances in, and creates a huge fire risk.
- Unplug appliances at night or when you're not using them to reduce the risk of fire – unless they are designed to be left on all the time (for example, a fridge or freezer).
- Make sure you follow instructions for all electrical devices and that you use the correct chargers in line with the manufacturer's guidance. If the wrong charger is used for an electrical device, the internal battery can't handle a different voltage and it can catch fire.
- Always buy from a shop you know and trust, an approved retailer or direct from the manufacturer of the same name as the device.



•Never leave items on charge when you are sleeping or when you are not at home.



More information about the Unplug To Unwind campaign can be found on the DWFRS website [www.dwfire.org.uk/unplug-to-unwind/](http://www.dwfire.org.uk/unplug-to-unwind/)



## Coffee Morning Drop In



Every Tuesday  
10.30 -11.30 am  
in the Three Dagers.

Transport available contact  
Pauline or Joy.





# Edington Village News

ISSUE - 55  
DECEMBER  
2024



## A new look for the new name

Wiltshire and Bath Air Ambulance has a new name, a new logo – and a new look for its helicopter and critical care cars.



The logo has been designed with Keevil-based company Rednine, and proudly shows off the new name, Wiltshire and Bath Air Ambulance Charity, alongside the new avatar.

The avatar is circular, with a central H, surrounded by a heart.

The H is shaped like a helipad and also shares a health aspect. The heart wrapping around the H signifies the protection and care provided by the charity to the local community.

Our new support line of 'Going above + beyond' comes direct from feedback given by supporting during the rebranding process. It is a nod to our helicopter, which goes above and beyond in the skies over Wiltshire and Bath, but also references the enhanced critical care expertise provided by the aircrew.

To comply with accessibility requirements, the charity has also adopted a darker green, whilst still retaining its historic and much-cherished colours.

This is how the changes have been reflected on the helicopter and for the critical care cars used by the clinical crew.




Most visited locations

- 1 Swindon
- 2 Bath
- 3 Chippenham
- 4 Devizes
- 5 Salisbury

Most frequent missions

- 1 Cardiac emergencies
- 2 Medical incidents
- 3 Road traffic collisions
- 4 Falls
- 5 Self-harm trauma

So far this year

# 1,229 missions



**WILTSHIRE AND BATH WRAPPED**





## Wiltshire Council

### Rehome it – donate your unwanted Christmas decorations

It's nearly the most wonderful (and wasteful...) time of the year again!

Many of us will already be starting to think about putting the Christmas decs up. Here are some tips on what to do with your unwanted decorations:

Tinsel and baubles are not recyclable, instead you can donate good quality decorations to your local charity shop for reuse. You can also donate good quality Christmas lights you no longer use too.



If decorations contain dead batteries, make sure to recycle these by placing them in a clear sealed bag next to your blue-lidded bin/sack on collection day.

If you have electrical decorations that are not suitable for reuse, you can recycle them. Any electrical item smaller than the size of a standard shoe box can be collected for recycling at the kerbside. Simply place in a supermarket carrier bag next to your blue-lidded bin or bag on collection day. Larger electricals can be recycled at a household recycling centre (HRC).



### Council makes decision on kerbside recycling changes from 2027



At its meeting on 19 November Wiltshire Council's Cabinet agreed its future approach to collecting recycling when its current contracts to carry out this service come to an end in 2026. Once the changes are introduced in 2027, which will see us start to collect flexible plastics from the kerbside, it should result in a significant reduction in annual revenue expenditure, increased income from commodity sales, improved recycling rate, simplification of the recycling sorting process and significant reduction in carbon emissions. As confirmed previously, we will also commence food waste collections from the kerbside in 2027.



[Find out all the details here](#)

### Household waste, recycling, and garden waste collections over Christmas

There will be changes to your collection days for all household collection services over the Christmas period. Your online waste collection calendar has already been updated to reflect these changes. You can check it here - [Waste collection calendar - Wiltshire Council](#)





# Edington Village News

ISSUE - 55  
DECEMBER  
2024




**Recycle your wrapping paper**

If you can **scrunch it** and it **doesn't spring back**, you can recycle it



[www.wiltshire.gov.uk/recycling](http://www.wiltshire.gov.uk/recycling)

**Wiltshire Council**



Waste collection crews will not be working on Wednesday 25 December, Thursday 26 December and Wednesday 1 January.

Garden waste collections will cease for two weeks over Christmas. The last collections will take place on Tuesday 24 December. The

garden waste service will be suspended for collections scheduled for Wednesday 25 December 2024 to Tuesday 7 January 2025. Collections will resume on Thursday 9 January 2025, for those with a collection due on Wednesday 8 January 2025.



**Christmas waste and recycling collection schedule**

[ilforms.wiltshire.gov.uk/WasteCollectionDays/index](http://ilforms.wiltshire.gov.uk/WasteCollectionDays/index)

**Wiltshire Council**

Your online collection calendar is already updated with your revised collection dates

Your normal collection day	Rescheduled household waste and recycling collections	Garden waste collection
Wednesday 25 December 2024	Friday 27 December 2024	⊗ No collection
Thursday 26 December 2024	Saturday 28 December 2024	⊗ No collection
Friday 27 December 2024	Monday 30 December 2024	⊗ No collection
Monday 30 December 2024	Tuesday 31 December 2024	⊗ No collection
Tuesday 31 December 2024	Thursday 2 January 2025	⊗ No collection
Wednesday 1 January 2025	Friday 3 January 2025	⊗ No collection
Thursday 2 January 2025	Saturday 4 January 2025	⊗ No collection
Friday 3 January 2025	Monday 6 January 2025	⊗ No collection
Monday 6 January 2025	Tuesday 7 January 2025	⊗ No collection
Tuesday 7 January 2025	Wednesday 8 January 2025	⊗ No collection
Wednesday 8 January 2025	Thursday 9 January 2025	Thursday 9 January 2025
Thursday 9 January 2025	Friday 10 January 2025	Saturday 11 January 2025
Friday 10 January 2025	Saturday 11 January 2025	Friday 10 January 2025





## *Village Musings*

### Christmas time in Edington!

So much going on in our wonderful village this month. The lighting of the Christmas Tree in the Playing Field, with carol singing led by the local brass band was a magical event, everyone dressed warmly in hats and scarves singing out the old favourites and then enjoying mulled wine afterwards. Thank you to everyone involved in making this such a lovely time to get together and share the Christmas spirit.



There will be beautiful services in our beloved church – Advent services have already taken place and everyone is most welcome to the Christmas services. A carol service on 22nd December at 4.00pm and the very popular crib service for children on Christmas Eve at 4.00pm as well as midnight mass



and the morning services are heartwarming, community events to which everyone is invited, whether you are a person of any faith or none.



In January we will have the village Wassailing – another great opportunity to gather with other villagers for fun and celebration of ancient ceremonies. And the walks around our village at the moment in these dark evenings are brightened by the sparkling lights in gardens and houses – it is worth going out for a night time walk in December.

A blessed and merry Christmas to everyone and a peaceful new year!

### Mercedes





# Edington Village News

ISSUE - 55  
DECEMBER  
2024



## Edington & District Gardening Club



### December News

A very enjoyable evening was spent at our Christmas Social, this year held at The Farmhouse at Southwick. Thank you to all those involved, including Sarah, our driver of the TVM for the evening.

The next club meeting in the Parish Hall will be Thursday 6th February, doors open 7.00pm, the speaker will be David Maloney talking on the Wilts and Berks Canal Trust. Visitors are most welcome.

On behalf of the committee, I would like to send best wishes to all the readers of this article for the festive season, and we wish you all a very healthy and happy new year. It won't be long before Spring is upon us again!

Jacky

## Forthcoming roadworks



**6 Jan 2025 - 10 Jan 2025**

Greater Lane, Edington - Road Closure  
Wessex Water - new connection

**6 Jan 2025 - 10 Jan 2025**

B3098 Westbury Road, Bratton - Traffic Lights  
Wessex Water - To dig and locate main in road and provide source of water for a new build development ready for self lay company to take over!

### Reminder

A36 at Limpley Stoke is now closed again until 31 May 2025

You can find out about roadworks across Wiltshire by going to <https://one.network/>

# HALL FOR HIRE



## EDINGTON PARISH HALL

PARTIES - MEETINGS - PRIVATE FUNCTIONS

Nearby private carpark

For more information and to book online go to  
[www.edingtonwiltshire.org.uk/hall](http://www.edingtonwiltshire.org.uk/hall)  
or email [parishhall@edingtonwiltshire.org.uk](mailto:parishhall@edingtonwiltshire.org.uk)  
phone 01380 830 441





## Wildlife of Lundy Island - Part 2

I continue the story of the wildlife on Lundy an island. in the Bristol Channel. It is small being about 3 miles long and a half mile wide and is divided into quarters by 3 stone walls. Its wildlife is dominated by migrating birds in autumn and breeding seabird colonies in spring and early summer

Besides the huge number of birds migrating through Lundy in autumn there were still the other animals, and these are usually there all year round. These include a few mammals, lots of insects and a lot of marine life like seals, corals, and anemones living among the kelp along the rocky seashores.

The only indigenous Lundy land mammal is the Pygmy Shrew. These tiny insectivores can be seen in and around the properties but also in the natural landscape.

Bats are occasionally observed on Lundy and are usually assumed to be one of the pipistrelle species. These are either the Common Pipistrelle or the Soprano Pipistrelle which have both been recorded along with the Greater Horseshoe Bat during surveys on the island.

Several mammals have been introduced to Lundy Island over the years. In two visits we have seen all the larger species.

Seven Sika Deer were introduced to Lundy in 1927 and increased in numbers, despite regular culling. In 2022 the population was estimated to be in excess of 130



**Sika deer doe on Lundy Island**



individuals.

The livestock on the island are also interesting and in the twentieth century a new British breed of pony the Lundy Pony was bred on the island. On our walks round the island, we often saw some of the semi-feral Lundy ponies grazing near the track. These ponies are usually cream, dun, or bay. I love the dun ponies with their light bodies and dark main and tail.



**A dun Lundy pony with the old lighthouse in the background**

Also, on our walks around the island, we saw lots of Soay Sheep and I spent some time photographing them. They are a rare breed of sheep take their name from the island of Soay in St.Kilda from which they originate. These fluffy little sheep are primitive and have changed little since Neolithic times when similar sheep would have been kept on the island by the inhabitants of the time. The original flock were introduced to Lundy Island in 1942. On the island they are found north of Quarter Wall and are annually monitored and maintained to ensure that their numbers do not negatively impact upon the Site of





# Edington Village News

ISSUE - 55  
DECEMBER  
2024



Special Scientific Interest on which they graze. Any produce is made available through the menu in the Marisco Tavern as part of Lundy's sustainability initiative.



**I enjoyed photographing the Soay Sheep**

A herd of Highland Cattle was introduced in 2012 as part of the island's conservation programme, to assist with the control of rough foliage such as Purple Moor Grass to increase the vegetation diversity.



**We saw some rather fierce looking Highland cattle near Pondsbury.**



Goats have probably existed on Lundy since the time of its earliest human inhabitants, and it is likely that some of these would have escaped.

Further introductions occurred in 1926 and subsequently. Today the population varies between 30 and 50 and all have the typical appearance of wild goats being long-haired with horns. Numbers are controlled to keep the population stable, and they are actively discouraged south of Quarter Wall to minimise damage to the Lundy Cabbage and other key plant communities.



**Goats have appeared on Lundy's stamps in the past.**

During the LFS Logbook meeting at Marisco Tavern mention was also made of insects seen migrating through Lundy. These are usually Painted Ladies, Red Admirals and Hummingbird Hawkmoths. In fact, when we were on Lundy in August 2019 the island was inundated with huge numbers of migrating Painted Lady butterflies on their northward migration. In addition, there were also a number of Red Admirals, and I had great fun photographing both of them.



**Painted Lady photographed on Lundy in August 2019.**





**There were also large numbers of Red Admirals on Lundy Island in August 2019**

Most insects though are year-round residents, and I photographed a number of them when we visited in August 2019. Some other Lepidoptera that we photographed were Meadow Browns and Small Coppers, Five-spot Burnets, and a few caterpillars including those of the Browntail moth.



**2019-08-04 Lundy - Meadow Brown**



**2019-08-05 Lundy - Small Copper**



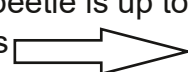
**2019-08-03 Lundy - Five-spot Burnet**

We also found the Granulated Ground Beetle at several places on the island. It's a large (16-23mm) granulate bronze, green or black predatory beetle. It is a common species found across the Palearctic from Ireland to Russia. It inhabits wet fields, river margins, lakeshores and forest. It is one of the very few species of ground beetles that have not completely lost their ability to fly. Nevertheless, they generally remain on the ground, where both adults and larvae feed on insects, worms and snails. They are nocturnal and during the day they hide under tree trunks or stones.



**Granulated Ground Beetle found on Lundy**

The Dor Beetle, or the Dumbledore, is a species of earth-boring dung beetle found on Lundy. It is common throughout Europe. The beetle is up to 2.5 cm long. The beetle is





# Edington Village News

ISSUE - 55  
DECEMBER  
2024



black, sometimes with a bluish sheen. Both adults and their larvae feed on the dung of large herbivores such as sheep, cattle and deer but display a preference for horse dung. They will also feed on well-rotted fungi.

Mating occurs in the spring, with both sexes excavating vertical burrows under herbivore dung pats that are up to 50cm deep. The female beetle will then dig a series of horizontal branches off the central burrow, in which she deposits dung and a single egg. She will then seal each chamber off with soil excavated from the next horizontal tunnel. Larvae develop through the summer, and some will pupate and emerge as adults during the autumn while others remain as larvae underground overwinter and pupate in the spring.



**The Dor Beetle a species of dung beetle found on Lundy**

The Brown-tail moth is a fluffy white moth found in open habitats and found mostly in Southern England and Wales. When disturbed, it often displays the brown tip of its abdomen. The caterpillars have hairs which are an irritant to human skin so they should not be handled. The body is covered with these brownish hairs. The hairs readily break off and can cause an intense irritation and rash on the skin. In July or August, the female lays batches of eggs on the foodplant and covers them with hairs from her abdomen.



The larvae live in a communal web where they spend the winter. They become active again in early spring and pupate in a cocoon during June and July.



**2019-08-03 Lundy Browntail moth caterpillar with irritant brownish hairs**

When we visited Lundy in August 2019, we had a chance to snorkel into Lundy's shallow kelp forests. The Landing Bay and the area south of Rat Island are easily visited. Here, north of Rat Island, a high proportion of the plants are golden kelp, a warm water species at their northern limit of their range.



**My family snorkelling in the kelp forest in August 2019**





Lundy also hosts all five species of shallow water stony corals found around Britain as well as colourful sponges, soft corals and sea fans.

One of the amazing stony corals, is the spectacularly colourful Sunset Cup Coral, which was discovered in British waters for the first time at Lundy in September 1969. Its stony skeleton is about the size of a thimble.



**The Sunset Cup Coral can be found in the waters around Lundy**

Around the coast one can also find a rich variety of seaweeds especially in rockpools and highlights such as the Snakelocks and Strawberry Anemones. We spent some time looking into rockpools and saw small fish darting about and species like cushion stars on the rocks. At the lowest tides, under overhangs and in pools, you may also find a Lundy speciality – the nationally scarce Scarlet and Gold Star Coral as well as jewel anemones and pendulous colonies of sea squirts.

Our trips to Lundy have always gone too quickly and we always wished we could have stayed a few more days. I will certainly be back in the near future as I would love to see the puffin and Manx Shearwater colonies during their breeding season.

**Stephen Henning**



## Reminder - Westbury Railway Station Closure



*From Friday 27 December 2024 until Thursday 23 January 2025, Network Rail is closing the railway through Westbury, and also between Westbury and Salisbury, for track works at Westbury station and maintenance works on the Sherrington viaduct.*

All trains through Westbury will be affected:

- Bristol to Salisbury and the South Coast
  - Bristol to Dorchester and Weymouth
  - Swindon to Westbury via Melksham
  - Trains to and from London Paddington
  - SWR services via Westbury and Castle Cary
- Journey times will be increased, and buses replace trains on some routes.

The information shown is subject to other planned engineering work taking place across the railway network.

Find out more at [GWR.com/Wessex](https://www.gwr.com/Wessex)



## YOGA WITH MARILYN

Would you like to improve your strength, balance and flexibility and also your well being?

Then why not join the new Yoga class in Edington Parish Hall

**When:** Each Friday morning

**Where:** Edington Parish Hall

**Time:** 10.30am to 11.30am





# Edington Village News

ISSUE - 55  
DECEMBER  
2024



## Local Photographer

Diane Vose



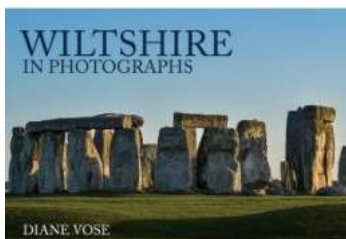
### Winter in Edington





# Edington Village News

ISSUE - 55  
DECEMBER  
2024



Wiltshire in Photographs is available from Waterstones, WH Smith and Amazon



***If you are a local entrepreneur or you run a local business and would like to feature in a future edition of this newsletter either contact us by email or talk to Pauline in the Post Office.***





## Charity Card Sale 2024



Thank you for your support for this annual event and for the cakes and help in the kitchen.

Always popular, the 8 charities attending this year were Guide Dogs for the Blind, including 2 guide dogs in support, Cancer Research, RNLI, Embrace, Happy Landings Animal Rescue, Alzheimer Support, The Royal British Legion, and MIND. The proceeds from the refreshments this year went to Fear Free.

Over £785 was raised for these charities.

See you next year!

**Pauline and Jacky**





**Edington and  
Tinhead W.I.**



## Imber Open Days



**“I would do anything for England”**  
 The words of Eliane Plewman, the French born Anglo Spanish Special Operations Executive deployed behind enemy lines during WW2. A chance encounter upon a short paragraph in a long family memoir was the spur that drove November's speaker, Jonathan Bailey, to dig deep into the past and to unearth the story of this almost unknown and unacknowledged woman and her colleagues. Last year we heard about Eliane's recruitment and deployment behind enemy lines, following gruelling physical and psychological training. A quick resume brought us to Eliane's final mission, capture, imprisonment and execution at Dachau. This was a world of secrets, lies and betrayals; but who was friend and ally and who the enemy? Was it really as simple as “them and us”? Were the relatively small number of SOE members on Eliane's final mission [and maybe others] betrayed for the greater good? Records are scanty, some official documents will not be released for another 80 years and in Jonathan's view there are too many inconsistencies and unexplained gaps in official records. Was there a cover up at the highest level that continues to this day? Pick your conspiracy theory!!

Our chosen charity for this Christmas is Fear Free; an organisation which offers a range of support and services for people, mostly women, who have been abused. We were asked if we could donate gifts that were just a bit special as a treat for Christmas and members' response has been very kind and generous.

In December we will be having a Christmas meal at one of our local pubs. January will see us back in the Hall to hear about Wiltshire Council's role and responsibilities in Bat Conservation.



### Post Christmas Open Days

St Giles Church will be open to visitors from Saturday 28th December 2024 through to Wednesday 1st January 2025 inclusive.

St Giles Church will be open between 1100hrs (11am) and 1600hrs (4pm) daily.

*Please Note: We only accept Cash for purchases in St Giles. There are no facilities for Card Payments*

On the post Christmas open days and all other open days there will be free and unrestricted access to Imber and the church via Warminster, Gore Cross and Bratton with free car parking in the village. **The road from Heytesbury (American Road) will remain closed due to its poor condition**





## Advent and Christmas at Edington Priory Church

On Wednesday 18th December at 2.30pm we have an Informal Carol Service in the Parish Hall combined with Afternoon Tea. Take a lighter look at the Christmas Story and enjoy Tea and Cakes with your friends and neighbours.

On the Sunday before Christmas, 22nd December at 4pm, we have our traditional Festival of 9 Lessons and Carols. The Church Choir and Edington Brass are combining again to help us sing all the well-known Carols and to introduce us to some lesser-known pieces as we hear again the story of Jesus' Birth.



At 4pm on Christmas Eve we have the Crib Service. Help yourself to a costume from our Dressing-Up Box and join in as we hear the Nativity Story and recreate the Manger Scene. A perfect reminder for your children and grand-children of what Christmas is all about.

Also on Christmas Eve, at 11.30pm we have the Midnight Mass. The account of Jesus's birth in the Bible, tells us that Jesus was born at night. Take the opportunity to welcome in Christmas Day with this late-night traditional Holy Communion Service.



Then on Christmas Morning at 9.30am we have our Family Celebration of Holy Communion. Join the celebration of the angels in singing, "Yea Lord, we greet Thee! Born this happy morning!" Jesus our friend and saviour is "born in our hearts today."



**Andrew King**

## The Postie's Retirement

The retirement of Edington's postie was marked by the December parish council meeting with the presentation of a £100 voucher for the Three Dagers from the parish council and on behalf of all the village. Lin also received a £50 token from the Dagers as a mark of thanks and appreciation.



Lin has worked in the village for 31 years. She started as a part timer, sharing the round with another postie, both using bikes and doing the post-sorting in a small room behind the old post office in the City. When the rounds merged, Lin took it on full time, and when the old post office closed moved into Westbury and was given the luxury of a van. Over the years Lin has gone above and beyond and she will be sorely missed by all her many customers.

We don't yet know who will be replacing Lin, but whoever it is they will have a hard act to follow.





## Keevil School

- Thank you for everyone who donated to our Rags4Riches project. We collected a mighty 432.80kg of clothing which meant an amazing £108.20 being paid into the FoKS kitty! The money will be used to buy some new books for our school library so a huge THANK YOU to everyone who contributed.

- On the same day as our clothing collection (12th November), everyone at school took part in Odd Socks Day. This was to raise awareness of Anti-Bullying week. The theme this year was 'Choose respect' and members of the Keevil Council designed posters to display around the school to promote the campaign.

- Congratulations to the Y5 and Y6 children who took part in the local football tournament at John of Gaunt School. Pupils from Keevil School played in 6 matches over 6 weeks, thoroughly enjoying themselves and being great ambassadors for the school throughout. And it was wonderful to see so many former pupils come out to support the team. Well played everyone!

- What better way of spending an afternoon of learning about food and where it comes from than getting up close and personal on a dairy farm? We are extremely grateful to Lucy and the team at Woody's Farm for hosting our Yr 3s for an afternoon of learning, experiencing and even some sampling! The unanimous verdict on the milkshakes is in – delicious!

- Thanks to the kind donation of its new home, our community library has been reopened! In the gated area to the side of our school, accessed from Church Lane, you will find a box



containing all sorts of books. Feel free to pop along to Keevil School, have a browse, take a book home, or leave a book for someone else to enjoy. Any children's books left in the community library will be relocated to our school library which is in the playground. You are very welcome to access this during term time. Please ring the bell at reception for access.



- On Friday 15th November, we took part in **Children in Need** with another 'Wear what you like' day and a very well supported baking competition and cake sale. The children surpassed themselves with an array of wonderful creations including a fun-fetti cake (with smarties hidden inside), a Pudsey pavlova, and even two upright Pudsey bear cakes. Well done to everyone who took part. The winners of the KS1 and KS2 competitions, as judged by (local!) celebrity guest judges, Keevil Parish Counsellors, Pat Tucker and Geoff West are pictured on the next page.

- November 29th sees our first **Christmas chocolate bingo** evening. At the time of going to print, the chocolate prizes have been collected and the venue has been booked. Dabbers at the ready and eyes down for a fun evening of festive bingo!

- Rehearsals are underway for our **KS1 Nativity**. Performances will be held on 16th and 17th December, followed by our **Christmas concert** on 18th December. Thank you to all the staff and parents who are fundamental in giving the children a chance to perform on stage, in front of an audience.

- Our Yr 3 and Yr 4 pupils are preparing for their **visit to Goodson Lodge** in Trowbridge in early December. As well as performing a selection of Christmas songs, the children have been creating cards for the residents.

- Keevil School breaks up on Friday 20th December and we return on Tuesday 7th January.

**Lindsey Hermon, Head Teacher**  
**Caroline Noonan, Chair of FoKS**





# Edington Village News

ISSUE - 55  
DECEMBER  
2024



## Some of our recent events



**Rags2Riches**



**KS1 Children In Need 2024 Bake Off Winners**



**Woodys Farm Trip**





## What's On in Great Cheverell



•There is a Fun(d)raiser by the Chevs Band - who are performing on Saturday 21st in The Pavilion- tickets are £5 and on sale at the Great Cheverell Stores.

•The church is putting on a 'Nativity Scene' display in St Peter's on Sunday 5th January. Invitation for people to get in touch to lend us their nativity scenes.

•And a future 'save the date' for the Pantomime which is going to be on 14th, 15th and 16th February.

### Twelfth Night Nativity Sets on Display

**St Peter's Church, Great Cheverell**

**Sunday 5<sup>th</sup> January 2-5pm**

Teas and coffees, cake, squash and biscuits available to buy

For information or to lend us your nativity set, please contact Vanessa on [vareburn@btinternet.com](mailto:vareburn@btinternet.com) or Nicola on 07824 397 111 or [ncoupe@sky.com](mailto:ncoupe@sky.com)



*Silent Night Oh Holy Night.*

### The Killer PANTO

#### Returns!

with a supremely silly take on **Midsomer Murders – Part Two!**

**AT THE GREAT CHEVERELL PAVILION**

Performances are planned for 15<sup>th</sup>, 16<sup>th</sup> and 17<sup>th</sup> February 2025 (Half Term)

Save the date & make a note to buy your tickets! (On sale in Great Cheverell Stores in January, or contact Nicola on [ncoupe@sky.com](mailto:ncoupe@sky.com))



Able to help? Contact Steph 07786 543087



**Let's Move!**  
DANCE FITNESS

Low Impact Dance Fitness  
Edington Parish Hall  
Tuesdays 10-10:45am





# Edington Village News

ISSUE - 55  
DECEMBER  
2024



## Edington Parish Hall



The last few weeks have seen more activity in the Parish Hall in addition to the regular weekly and monthly events – Wessex MG Club Social, the annual Charity Christmas Card Sale, Quiz Night, the Friends of Erlestoke Prison Lunch, an Advent Retreat, the Edington Arts Advent Concert Choir Supper, the annual Christmas Lunch as well as the informal Carols and Tea to look forward to.



The Parish Hall can be used for so many different events so why not consider booking it in 2025!



On a dreary November evening, ten teams gathered in the Parish Hall to do battle for the bragging rights

of the year and of course to enjoy a curry supper!

A table quiz on Christmas Lyrics got the “little grey cells working” as everyone gathered and then the serious quizzing started. The rounds covered topics from Famous People, Sport, Geography, to History (May Hop scoring full marks in this



round, a good decision to play their joker as well!) and Science & Technology with an added twist of linking music clips to Science & Technology, gave the teams food for thought. After a break for supper and another table quiz where teams were asked to identify ‘Who painted famous works of Art, the final four rounds would determine the winners.



Identifying Christmas Songs from just a snippet of the lyrics proved hard – people mostly knew the songs but could not remember the title! Naming the painter of famous works of art proved less taxing with the May Hops scored 17/20. The overall winners of the table quizzes were The May Hops with 27/50, with Flash in the Pan coming second with 25/50 and the Tired Ones coming third with 21/50.



However, the overall winners of the quiz with 73/80 were Flash in the Pan (winners for the second year running) with the May Hops second with 68 points and the Tinheads Mark 2, third with 60 points. Congratulations to them and to all of the teams who took part.

Thanks to John the quiz master, Janet for keeping the scores up to date and Helen for taking the bookings and organising the ‘Lucky Bucket’. Thanks also go to Chloe for her invaluable help in the kitchen especially with the washing up and to everyone who took part in the quiz £300 was raised for the Parish Hall improvement fund.





**Hall Hire Charges** These will remain at £10 per hour plus an additional charge of £12 if full use of the kitchen is required, for as long as possible in 2025. However, these charges will be kept under review especially with regard to the cost of services such as electricity.



The Parish Hall Committee would like to thank everyone, who has booked the hall this year, the Village groups, Edington Brass, Edington Music Festival, Edington Arts, those who run Dance Fitness, Tai Chi and Yoga classes and those who have booked the hall for social and family events, your support is much appreciated and helps us maintain the hall as a valuable community asset.

Thank you once again to Edington Station Yard Limited for their kind donation to the Parish Hall funds, their continued support is much appreciated.

Wishing everyone a very Merry Christmas and a Happy and Healthy New Year and we hope to welcome you to the hall in 2025!



**Wendy Pollard**  
**Parish Hall Committee Chair**

## MISSING FROM THE PARISH HALL

Unfortunately, 6 dinner plates have disappeared from the Parish Hall. As no breakages have been reported perhaps the plates have been taken away with goodies on them but despite good intentions have not been returned!



If you have one or more of these plates, PLEASE return them so that those who book the hall have all of the crockery available to them.  
Thank you

## Christmas Quiz

*Can you name the song that the Christmas lyrics came from? The teams at the quiz only managed to get 10 correct!!!!*



### LYRICS

- 1 Don we now our gay apparel
- 2 And folks dressed up as Eskimos
- 3 Join the triumph of the skies
- 4 But the fire is so delightful
- 5 Raise a glass for "Auld Lang Syne
- 6 Glories stream from heaven afar
- 7 The playing of the merry organ
- 8 The villages go by like dreams
- 9 They said there will be peace on Earth
- 10 Snowing and blowing up bushels of fun
- 11 At Christmastime it's hard but when you're having fun
- 12 And man will live for evermore
- 13 You will get a sentimental feeling
- 14 Here to stay is a new bird
- 15 The cattle are lowing
- 16 "Sister Susie sitting on a thistle"
- 17 The mood is right, the spirit's up
- 18 A silent wish sails the seven seas
- 19 Then one foggy Christmas Eve 2
- 20 Outside the snow is falling, And friends are calling Yoo-uu
- 21 Though the frost was cruel
- 22 She thought that I was tucked up, In my bedroom fast asleep
- 23 Come they told me
- 24 This year, to save me from tears
- 25 Think of all the fellas that I haven't kissed
- 26 Ring out those bells tonight
- 27 Field and fountain, moor and mountain
- 28 For the yellow and red ones
- 29 And two eyes made out of coal
- 30 He knows when you've been bad or good

The answers can be found on the newsletter website.

[https://  
newsletter.edingtonwiltshire.org.uk/  
christmas-lyrics-answers](https://newsletter.edingtonwiltshire.org.uk/christmas-lyrics-answers)





## Recipe of the month - December



### FESTIVE SPICED RED CABBAGE

*A bright festive and delicious vegetable dish to serve with Christmas Dinner. It can be made ahead of the big day as it freezes well. It is also delicious with venison or game casseroles as well as sausages*

#### Ingredients

- 1 large red cabbage finely shredded
- 2 onions finely sliced or finely diced
- 2 cooking apples peeled, cored and chopped
- 4 Tbsp brown sugar
- 4 Tbsp red wine vinegar
- Pinch allspice or nutmeg
- Pinch cinnamon
- Pinch ground cloves
- 100g (5oz) fresh or frozen cranberries
- 50g (2 oz) butter



#### Method

1. Prepare the vegetables.
2. Layer up the cabbage, onion, apple, brown sugar, spices and cranberries, in a large oven proof dish, finishing with a layer of red cabbage.
3. Pour over the red wine vinegar, and dot the top with butter.
4. Cover and then cook at 160 C gas 3 for approx 2 hours.

**Note:** it can also be cooked in a saucepan, over a low heat or in a slow cooker on low for 5 hours (I usually make this in the slow cooker). Freezes well





## WHITE HORSE NEWS

As you may have noticed the White Horse News is no longer delivered to properties in Edington, however we have been in contact with the publishers and they are happy for the Edington Village News to fill the gap and with their permission we will now be publishing extracts from their newsletter in our publication every month.

You can always read the full online edition at :- [www.whitehorsenews.co.uk](http://www.whitehorsenews.co.uk)

### Museum launches new book telling the story of Westbury

A new historical book offering a captivating look at Westbury's history from prehistoric times to the present day has been released by Westbury Museum.

The book, *A Westbury Timeline*, traces the evolution of Westbury, beginning with its Jurassic origins. The story includes two pliosaurs—fearsome marine predators—discovered in local clay pits during the 1980s and 1990s, and evidence of early human activity dating back to the Neolithic period (4000–1800 BC).

There are details of Roman villa sites found in the area, the story of the Battle of Ethandun, fought in Edington near Westbury in 878, where Alfred the Great defeated the Danes—the first important step on the road to a united England; and what Westbury was like at the time of the Domesday Book in 1086.

The book also covers the outbreak of the plague in 1603–04 and of smallpox in 1767, Westbury during the Civil War, and the origin of the town's famous White Horse.

[Read the full article here](#)



### Fresh concerns over air quality following landmark compensation case



Fresh concerns have been raised about air pollution in Westbury, with Wiltshire Council facing criticism for a lack of proactive measures to address the town's pollution issues.

It follows the UK government's decision to compensate Rosamund Adoo-Kissi-Debrah for the tragic death of her nine-year-old daughter, who became the first person in the UK to have air pollution cited as a cause on her death certificate.

Westbury councillor Mike Sutton says the government decision "raises matters of concern" over local air quality and that Wiltshire Council, rather than trying to find a solution, are trying to blame Bath for Westbury's traffic problems which have worsened since the closure of Cleveland Bridge to lorries redirected more traffic onto the A350 through Westbury. Local residents have also joined calls for action.

[Read the full article here](#)

### Community support shines bright

While the town celebrates, local groups are making sure no one is left behind this festive season. Organisations like the Westbury Area Network (WAN), Crosspoint, and the White Horse Day Centre are working tirelessly to provide food, advice, and a sense of connection for those in need.

The town's food bank is seeing record demand, with volunteers preparing festive food parcels and wrapping gifts for families. Residents are urged to donate items like mince pies, chocolates, and other treats to help bring holiday cheer to local families.





## THREE VILLAGES MINIBUS (TVM)



Destination	January	Start Time
Devizes	Thursday 9th	9.00am
Warminster	Tuesday 21st	1.25pm
Westbury	Every Thursday	1.25pm
Salisbury	Saturday 11th	9.30am

Please note that the **last trip to Westbury in December will be on Monday the 30th** (as the last Thursday would be Boxing Day holiday) and the **Devizes trip in January will be on the 9th.**

All these journeys accept concessionary passes and will return you to your door.

These trips are open to **all** residents of our villages; we welcome everyone, of any age.

**Contact Pauline or Joy Fraser to book a place**

TVM is also available for village groups to hire (contact Pauline on tel:830013).

Our next lunch will be on

Wednesday January 8th

**Joy Fraser (830426)**



## January Lunch in the Parish Hall



We are holding a 2  
Course Lunch  
(with a choice of main  
course and a selection of puddings)

on **Wednesday January 8th at  
12.30pm.**

in the Parish Hall, Edington.  
Price £8.00 in aid of the Three  
Village Minibus.

All will be most welcome to join us.

It is essential to let Pauline  
(tel: 830013) know, by Friday  
January 3rd, if you are coming, as  
this helps with catering  
arrangements.

TVM will provide door to  
door transport. Please



book your place with Pauline

**Booking essential as spaces are  
limited**





# Edington Village News

ISSUE - 55  
DECEMBER  
2024



## Edington What's On Diary



Date	Time	Event	Venue
<b>December</b>			
17th December	1.25pm	Warminster Shopping Trip	
18th December	2.30pm	Informal Carol Service	Parish Hall
22nd December	4.00pm	Nine Lessons and Carol	Priory Church
24th December	4.00pm	Crib Service	Priory Church
30th December	1.30pm	Westbury Shopping Trip	
<b>January 2025</b>			
9th January	9.00am	Devizes Shopping Trip	
11th January	9.30am	Salisbury Shopping Trip	
14th January	7.30pm	WI talk - Bat Conservation	Parish Hall
21st January	1.25pm	Warminster Shopping Trip	
<b>Weekly</b>			
Every Monday	11.00am	Tai Chi	Parish Hall
Every Tuesday	10.00am	Let's Move Dance Fitness	Parish Hall
Every Thursday	1.25pm	Westbury Shopping Trip	
Every Friday	10.30am	Yoga	Parish Hall
Every Friday	6.00pm	Edington Brass	Parish Hall

*TVM trips - please Contact Pauline or Joy Fraser to book a place*

### Contacting us

Email the newsletter at  
[newsletter@edingtonwiltshire.org.uk](mailto:newsletter@edingtonwiltshire.org.uk)  
or via the newsletter website  
[www.newsletter.edingtonwiltshire.org.uk](http://www.newsletter.edingtonwiltshire.org.uk)

### Future editions

We welcome your comments on this venture, please send them to the address below. If you would like to contribute an article to a future edition of the Edington Village News please email us with details of your article and we will contact you or speak to Pauline in the Post Office.

[newsletter@edingtonwiltshire.org.uk](mailto:newsletter@edingtonwiltshire.org.uk)



**Deadline for articles 10th of the month.**

### Sharing the Newsletter

We are still hearing about villagers who say that they haven't heard about this newsletter, next time you speak to any of your neighbours and friends why not ask if they are receiving a copy and if not inform them that they can register for an emailed copy through the village website or send an email, the address is below. If they are unable to receive an electronic copy a paper copy can be obtained from Edington Post Office or perhaps you could volunteer to print out a copy for your neighbour.

If you would like to receive this newsletter electronically please visit the newsletter website and enter your details  
[www.newsletter.edingtonwiltshire.org.uk](http://www.newsletter.edingtonwiltshire.org.uk) or email and you will be added to the mailing list.

[newsletter@edingtonwiltshire.org.uk](mailto:newsletter@edingtonwiltshire.org.uk)

