



## Contents

- Village Helpline - latest
- Local Surgeries - latest
- Wiltshire Council
- Edington Parish Council News
- Musings Of A Villager
- Edington Volunteers
- All Footpaths Are Equal
- A Wildlife Safari
- what3words
- Beetles Of Edington
- 100th Birthday
- Three Daggers Farmshop
- Edington Parish Hall - covid update
- The Link
- School Memories
- Competition Time
- Small ads / Swaps
- Contacting us

## Village Helpline Latest

Now that we are entering lockdown again we anticipate that there may be a demand for the village helpline to assist people.

The Edington Village Helpline can provide assistance with shopping, collecting prescriptions, dog walking and a listening and talking service along with many other things that we can find access too. If you need help please call the helpline and we can help you in these difficult times, if we cannot help we will find someone who can help you.

The Parish Council has received some donations to help villagers experiencing difficulty in these times, if you are struggling to purchase essential items or pay outstanding bills please contact the helpline and we may be able to assist you.

This newsletter is published monthly but we may produce it more frequently if there is a change in information or events, the village website will also be updated on a regular basis to help keep everyone up to date with the latest information. The newsletter can be delivered directly to your inbox just visit

[www.edingtonwiltshire.org.uk/newsletter](http://www.edingtonwiltshire.org.uk/newsletter)

and enter your details.

Don't forget to contact the help line on **07933143021** (now available 9am to 6pm, 7 days a week)

Welcome to the seventh edition of the Edington Village News and again a thank you to those people who have made positive comments about the new initiative. Our subscription list of people who receive the newsletter online continues to grow and we have an unknown number of subscribers who either receive it in printed form or it is emailed to them by friends.

This month we again have a number of very interesting articles submitted by villagers including, the latest update on the work being undertaken by the new volunteers group in the village and the exploits of the Petersen's.

Remember if you have anything that you would like to swap, sell or give away please email us at our usual address, [newsletter@edingtonwiltshire.org.uk](mailto:newsletter@edingtonwiltshire.org.uk) with your name, details of the item(s) and even a photo of the item if you wish. Please ensure that we have this information by the 1st of the month.

**WILTSHIRE NEEDS YOU TO PLAY YOUR PART**  
Help control the spread of COVID-19

When you go out:

- Wash Hands
- Cover Face
- Make Space

#WiltshireTogether



## Local surgeries latest

**REMEMBER YOU MUST WEAR A FACE COVERING  
WHILST IN THE BUILDINGS**

### White Horse Health Centre and Bratton Surgery



**Westbury surgery TELEPHONE 01373 828330**

**Bratton Surgery TELEPHONE 01380 831911**

The latest statement from the surgery is:-

To slow down the spread of coronavirus, we have worked to reduce the number of people coming into the practice by using online consultation systems like e-Consult (on our website), telephone appointments and video consultations.

The top priority is, and has always been, to keep you and our staff safe while ensuring you get the care you need.

This is why we ask you to continue what you have been doing to access your GP service.

Please do not visit the GP practice without an appointment. Instead call the practice or go to our practice website. You can speak to a GP or nurse over the phone, email or have a video consultation. This will often mean you get to see the right person to help you, much quicker.

If a doctor or nurse does need to see you in person then you will be given an appointment to attend the practice.

You should only attend for an appointment at the surgery if you have been asked to, this in turn will mean:

- you are reducing your risk of catching/spreading coronavirus by avoiding a waiting room
- you are helping to keep staff healthy and safe
- The practice is able to maintain a clean environment and protect you from the virus.

Please also remember that if you are offered an appointment then it might not always be with the clinician of your choice. We encourage continuity with the same GP so you may prefer to wait to see the clinician of your choice.

While we realise this could be inconvenient, we think it is important to keep people safe, reduce the spread of coronavirus and get the maximum benefit from the healthcare resources which will be available.

A home visiting service, for patients who are unable to leave their home due to being housebound will be provided.

<https://www.westburygp.co.uk/>

### Courtyard Surgery West Lavington



**TELEPHONE 01380 813 300**

The latest information from the surgery is:-

If you are feeling unwell, please click on the Doctorlink Logo on our website, to access the online symptom checker, which can give you advice about your illness.

This may suggest anything from go to the chemist to buy something to dial 999 for an ambulance.

At the moment you can't book appointments online but we get sent an e-mail whenever the checker is used to let us know what advice you have been given.

#### **Making an Appointment**

Because of the Total Triage rules we are not booking people straight into appointments. Every morning and afternoon there is a duty health care assistant, nurse and doctor in the building.

When you phone us, you will speak to a member of our patient support team. It might be a receptionist, an HCA, a nurse or someone who normally only works with computers. They will ask





for your name and as much information as you wish to give us. All this information is put onto a triage slot held on our computers where it is seen by the duty team. You will not be called on a first come, first served basis. They will look at the information, and decide who is the best person to contact you, and how urgent it is. If you are calling about a blood test it is best to talk to the person who will take your blood, rather than a doctor.

The more information you give us the more chance there is of you talking to the right person first time.

If you are going to be busy or away from your phone at certain times, let the patient support team know, so that you can speak to someone when you are not going to be distracted. We cannot guarantee what time you will get your call.

You can find out more including an online consultation system on the surgery website.

[www.courtyardsurgery.co.uk](http://www.courtyardsurgery.co.uk)

## Market Lavington Surgery

TELEPHONE 01380 812500



The practice is working as normal. Appointments can be made online, in person or by telephoning the surgery. If the appointment is not urgent please do not ring before 10:00 am. Most appointments can be made up to one month in advance.

You can find out more including an online consultation system on the surgery website

[www.marketlavingtonsurgery.nhs.uk](http://www.marketlavingtonsurgery.nhs.uk)



Terence Herbert, Chief Executive, Wiltshire Council, said: "I would like to thank our residents and businesses for their continued commitment in helping to curb the spread of the virus. Without these efforts, we would have seen even more cases in Wiltshire".

"Whilst infection rates in Wiltshire remain lower than in many parts of the country, we have still experienced a rising number of positive cases in recent weeks. We anticipated Wiltshire would move into a higher alert level in the coming weeks and we have already put plans in place to continue protecting our residents".

"Whilst this is undoubtedly a worrying time, I want to reassure residents that Wiltshire Council is here for them. We are here to provide support to all of our communities, particularly our most vulnerable residents. We will also ensure that support is available for our businesses. We are also working closely with schools as they return from half-term break. All schools are COVID-19 secure and it is important that young people in Wiltshire remain in school at this time".

"We are awaiting further details from central government about support available to businesses and the full impact the restrictions will have on council services.

"Our Wellbeing Hub remains open to anyone that needs additional support. Please call us on **0300 003 4576** , Monday to Friday from 9am to 5pm.

"If we all continue to do the right thing and follow these measures, we can curb the





spread of the virus and help protect ourselves and our loved ones too."

Your local Wiltshire Councillor is  
**Suzanne Wickham**

**Email:**

[suzanne.wickham@wiltshire.gov.uk](mailto:suzanne.wickham@wiltshire.gov.uk)

**Tel 01380 870476 Mob: 07967 213336**

## Useful Contacts if you need help and support

If you are self isolating, you could contact one of these organisations for help and support, all of them have websites and most have phone numbers:

Age UK Wiltshire 0808 196 2424

Asthma UK 0300 222 5800

BHF 0300 330 3311

CALM helpline for men open 5pm to midnight  
0800 55858

Diabetes UK 0345 123 2399

Mind 0300 123 3393

No Panic helpline for young people  
0300 606 1174

Samaritans 116 123

Scope 0808 800 3333

Silver Line independent support for older people  
0800 470 8090

Wiltshire Council Wellbeing Hub 0300 003 4576

For information and extra help as to how keep safe online visit

[www.actionfraud.police.uk](http://www.actionfraud.police.uk)

Also victim support either through the website

[www.victimsupport.org.uk](http://www.victimsupport.org.uk)

or their support line – 03003030157

## Edington Parish Council News

If you walked to the bottom of Inmead recently you may have noticed that the litter bin has disappeared, after numerous phone calls we discovered that Wiltshire Council had removed it because the post was damaged but failed to inform the Parish Council that they had removed it. Hopefully the new post will be installed in the next few days and then we will have to wait for Wiltshire Council to reinstate the bin itself. The Parish Council have over the years installed a number of extra bins around the village and have a contract with Wiltshire Council to empty them on a regular basis. If you see a bin in the village that needs emptying please report it on the "MyWilts" app available on all smartphones or via the Wiltshire Council website,

<https://my.wiltshire.gov.uk/>

This can also be used for reporting a variety of issues from potholes to fly tipping, so please don't assume that someone else has reported it. The link to download the app can be found at <https://www.wiltshire.gov.uk/mywilts-online-reporting>.

You will see later in this newsletter an invitation to the young people of the village to design a Christmas card. Please encourage your children and grandchildren to take part in this competition and we will be giving prizes to the best in each category. The winning cards will also be available to download and print out from the village website in order that people can display them in their windows over the festive season.

To try and brighten up the village from these somewhat gloomy times we are encouraging as many people as possible around the village to **"Light up Edington for Christmas!!"** Do you have a set of exterior Christmas tree lights stowed away in the cupboard, if so why not get them





out over the next few weeks and test them and then at the start of December we can put as many lights as possible up around the village in people's front gardens to brighten the village after the latest lockdown. **Let's light up Edington for Christmas.**

Don't forget you will also be able to download and print out the winning Christmas cards to display in your window as well.

Edington Farm Shop have very kindly donated a Christmas tree for the Playfield again this year and subject to whatever the latest restrictions in place at the time we hope to have it illuminated in early December. More details on the village noticeboards and website nearer the time.

There was a wildlife pond to clear and clean, ready for a winter rest – and ready for the mallard ducks that fly in during winter and spring.

People notice that the more they give to a community, the more fun it is to be part of that community. Working in a team with others to complete a project for the benefit of the community brings huge mental health benefits, as well as the extrinsic benefits of the work itself.

In our beloved village, there is a real sense of a community working together to ride this storm, to keep each other safe and to ensure that, at the end, we are all in a good place to pick up a more typical way of life.

**Mercedes Henning**

## Edington Volunteers

The latest endeavours have taken place around the village and although last month's session was moved to a later date due to the torrential downpour on the planned day a lot of work was completed.

The pond area has had a significant clean up including the pond itself; the area opposite the church "Ralph's Seat" had a tidy up and work continues on the repainting of the Parish Hall.

Unfortunately due to the latest lockdown restrictions the group will be unable to meet in November, however depending upon what happens after Lockdown 2 the gang hope to be back in December setting about the next set of jobs on the ever growing list.

On the next page are some photos of the work being undertaken in October.



## *Village Musings*

Living in a village like Edington is a privilege and a blessing. I love the little things people do to help each other. I love how people make up a flask of coffee and go and sit in the garden of an elderly, shielding neighbour to share a few minutes of company with them. I love watching people stop to pick up litter as they walk along, to keep our lanes clean and safe for wildlife. I love how people reach out to help and support their neighbours with swift generosity, fetching shopping and medication, sharing garden produce and checking on the vulnerable. I love how people greet each other, even if they don't know each other. I love how people embrace projects to keep our community strong, safe and beautiful.

Recently, a group of villagers gathered to do an autumn clean up around the village. There was some painting to do, to keep railings well maintained before the winter weather strikes. There was a lot of crazy summer growth to be cut away from our footpaths and village fields.



**The pond needs a tidy up!**



**Just a tidy up job?**



**Where is the pond?**



**Look what we achieved**



**Work well under way**



**Now all we need is the weather for a picnic!**



**Who said that it was only a small amount?**

Details of future sessions will be placed on the What's On section on the village website. We will also post information about where we are meeting for each session, and the jobs that we hope to undertake so why not come along and join in.



## ALL FOOTPATHS ARE EQUAL



Hello, you may have met me in edition two of this on-line newsletter. I am Brodie, the Pets As Therapy dog, and my humans brought me to live in Edington four and a half years ago. We really love it here but lately I have noticed a worrying trend whilst out on walks. There is an increasing number of dog poo deposits left on footpaths so clearly my canine colleagues have not educated their human carers as to the need to bag it and bin it. Leaving dog poo on footpaths is both socially unacceptable and can be dangerous as it can cause disease in humans.

I know my humans get very angry if they inadvertently step in some that has been left by uncaring dog owners. Dog poo bags are incredibly cheap (my humans favour Sainsbury's own but other brands are available) and there are numerous dog poo bins located around the village so there really is no excuse for not picking up. My humans even have neoprene dicky bags in which they can put my bagged poo until they reach a bin (saves carrying a sometimes smelly bag).

A lot of these deposits are left on footpaths around fields and it seems that some of your humans think there is no need to pick up in these locations. These are footpaths, however, and there should be no difference between

footpaths no matter what their surface. The clue is in the name, they are footpaths where humans place their feet (i.e. walk). Also, some of these footpaths are not public rights of way but are permissible footpaths. It is very disrespectful to leave dog poo on land that the owner has given you permission to use. It's no way to repay them. OK moan over but please treat this seriously and let's keep the footpaths around our village clear of dog mess.

Remember, all footpaths are equal – bag it and bin it.

**Brodie, October 2020**



101 things to do with a bag of dog poo, this was in a cavity in wall at Erlestoke cricket ground, not as effective as bricks and mortar!





## A Wildlife safari - in Sussex!

Having recently found ourselves in Sussex, we decided to visit the Knepp estate near Horsham which is home to one of the largest 'rewilding' projects in the UK. Those who have read Isabella Tree's book "Wilding" will know the story: her husband Charlie Burrell inherited the 3500 acre Knepp estate in the 1980s and set out to be a normal intensive farmer, trying everything in the book to coax a living out of farming the the heavy Wealden clay on which it stands. After years of struggle and losing money, the pair were close to admitting defeat and looking around for alternatives - one of which was to turn Knepp into a new kind of nature conservation area.

Following the latest ideas in how the countryside looked before humans came along and altered everything, they decided to let nature take its course and decide for itself. Add to this the theory that the land was not endless forest in the UK before humans but was actually shaped by large browsing animals such as the aurochs (a type of wild cattle), wild horses, deer, beavers and boars. Obviously this is not as simple as it sounds - you need to remove all the internal fencing in what was previously a mixed arable



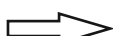
Landscapers hard at work.

and livestock farm and introduce strong perimeter fencing while respecting two bisecting public roads and cannot be undertaken without some help and cooperation from DEFRA. The parts of some of the wild animals were to be taken by English longhorn cattle, Exmoor ponies and Tamworth pigs, all of which are hardy and self-sufficient and the deer just played themselves. In earlier times there would of course have been predators too, but everyone drew the line at wolves and brown bears!

After the inevitable planning and applications, this was forthcoming and helped set everything up in 2001 and the next few years became a rollercoaster of letting things happen naturally and seeing what would happen, sometimes much to the disgust of the neighbouring landowners, especially when there was a plague of wild thistles! However, over time, Nature proved more than able to take care of itself, and the natural ecological balances kicked in to get back control.



Prehistoric JCBs in action!

As predicted, the land did not revert to thick forest, but more a kind of thorny scrub interspersed with wood pasture which (if the sun had been brighter and hotter) would have reminded us more of the Serengeti. 



There is no intervention at the moment other than taking the place of ancient predators and culling some of the animals each year to keep the numbers down to what can be supported by the environment and keep the animals healthy. No chemicals or other controls are used.

The bonus of all this, increasingly seen on the following years was the explosion of biodiversity that this brought to the area. Species that had almost disappeared or had become extremely rare were showing up such as Purple Emperor butterflies and turtle doves. Nightingales are now common in the summer months. Old style wild flowers proliferated and with them the insects that bred and fed in them along with the birds and bats that fed on them in turn in the pyramid of life. All owl species are present, as well as peregrine falcons. On our visit we were lucky enough to see the resident storks, which had been reintroduced and are now making new nests and breeding locally.

Next month the beavers are arriving! Great things are expected of them as natural engineers in water management and control of flooding.

Knepp ironically now makes money by running fully booked courses to teach other landowners how to do the same thing, also running their well attended safaris (all on foot now due to restrictions) and having a high end campsite with luxurious yurts.

The Knepp project does not pretend to be an answer for every area of Britain - it seeks to make the best use of marginal and least productive farmland and the underlying aim is to connect this by corridors to create a countrywide network of high biodiversity whilst still leaving it plenty of good land with the productive capacity to feed us all.

We are certainly going to return to Knepp for the dawn chorus safari in April or May, which promises to be a real ear-opener and bring back something not heard much in Britain for a half-century!

**John and Jo Petersen**

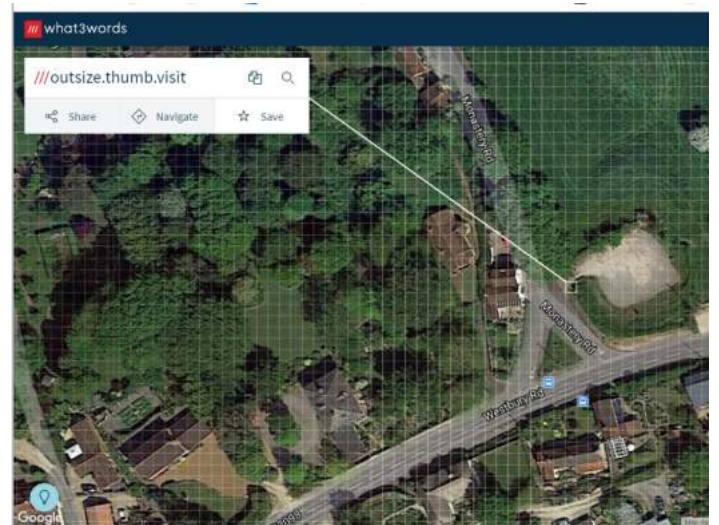


Street addresses weren't designed for 2020. They aren't accurate enough to specify precise locations, such as building entrances, and don't exist for parks and many rural areas.

This makes it hard to find places and prevents people from describing exactly where help is needed in an emergency, you only need to read out three words for 999 to know exactly where to find the incident.

### **What is what3words?**

what3words has divided the globe into 3m squares and given each one a unique 3 word address. It means everywhere can be located with just three words.



**Parish Hall car park entrance**





For example ///kite.chats.dine will take you to a precise spot in a field next to the River Ouse in York. what3words is available as a free app for iOS and Android and online map at [map.what3words.com](http://map.what3words.com). You can find out more about what3words here.

Without phone signal, the app functions the same as when you have no data connection: you can view the location of any what3words address you enter.

### **Is my local service using what3words?**

All three local emergency services are using what3words. Wiltshire Police, Dorset and Wiltshire Fire and Rescue, South Western Ambulance Service.

The seat on the top of Picket Hill is:-  
"presented.signed.pity"

<https://w3w.co/presented.signed.pity>

The Playfield entrance from Tinhead Road is:-  
"episodes.dislodge.fermented"

<https://w3w.co/episodes.dislodge.fermented>

## **Beetles of Edington**

"God has an inordinate fondness for beetles"

This is a quote often attributed to Charles Darwin. The simple reason he made this observation is that there are nearly 400,000 described species of beetle, and perhaps more, as compared with about 9,300 species of birds and only about 4,400 species of mammals. Beetles make up about 30% of all the animal species currently living on earth. There are, in fact, nearly twice as many beetle species as all the described plants in the world.

In the UK alone there are over 4000 beetle

species belonging to over 100 families. 1839 species have been recorded from Wiltshire. I am just going to mention a few of the most interesting I have seen around Edington and other beetle facts I have come across over the years.

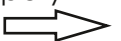
The huge number of beetles is due to that fact that they have evolved into all parts of the ecosystem and they can be carnivores, herbivores, omnivores, parasites - with different families typically feeding on poo, fungi, detritus, other insects, other animals (such as decaying corpses), pollen, sap, plants, seeds and fruits. In fact, beetles eat almost anything, and this is what makes them so successful. They live in deserts, forests, grassland, fresh water - just about any habitat you can think of.

Some bizarre species of beetle have evolved with huge horns, reduced wings, bright colours and some have reached quite awesome sizes. In fact, some of the largest and heaviest insects are beetles.



**The Goliath beetles of Africa are among the largest and heaviest insects and I had fun studying them in South Africa.**

We do have a smaller relative of the Goliath beetle here in Edington in the form of the Rose Chafer, only 20 mm long. It is metallic coppery-





green in colour with small, creamy-white streaks on its wing cases. The adults feed on flowers, particularly Dog Roses, during the summer and



**The giant larva of a Goliath beetle**

autumn, and can be spotted in warm, sunny weather. The larvae (which looks like the giant above) feed on decaying leaves, plants and roots, living in the soil for several years as they develop. When they pupate, they hibernate in the soil or in rotting wood over winter, ready to emerge as adults the following spring.



**Rose Chafer feeding on flowers**

What I have always found amazing is that nearly a quarter of described beetle species are weevils – there are in fact about 97,000 species of weevil. Here in the UK we have some 500 species and they are all plant feeding species. Most of us would probably not even recognise a

weevil if we tripped over one. They are often pests of crops. I love how their heads are drawn out into characteristic “snouts” with the antennae at the end. I remember as a child back in the 1950's that my mother would often find weevils in the flour and other stored food items.

An interesting species is the acorn weevil. The female uses her very long snout to bore into the centre of an acorn where she lays her egg. The larva feeds on the acorn, eventually tunnelling out as an adult. Acorn weevils live in oak woodland. They are quite common, particularly in the south of Britain. You may also find them here in Wiltshire on individual oak trees in hedgerows, parks and gardens.



**Acorn weevils are just 4-8mm long and have a brownish pattern on their bodies. The acorn weevil's most striking feature is its long snout, called a rostrum.**

Carnivorous beetles found in Edington include ground beetles, rove beetles, tiger beetles and ladybirds.

Ground beetles (Carabidae) and rove beetles (Staphylindae) are families of beetles which are largely ground dwelling, most are predatory.

Ground beetles are 2-25mm (up to 1 inch) long, many are black, but some are brown, green or blue, often with a metallic sheen. They are active, nocturnal predators, chasing and





catching smaller invertebrates. Most feed at ground level, but some will climb plants to feed on aphids and small caterpillars. One species often found in gardens around Edington, the violet ground beetle, has metallic-purple edges to the wing-cases and thorax. It is one of the bigger species, 20-25mm long, and it will feed on some of the larger garden invertebrates, including slugs, leatherjackets, cutworms and other caterpillars. Its long legs and powerful jaws mark it out as an active predator. I have often seen them running across the road or path when I walk around Edington. During the day they can be found resting under logs and stones and in leaf litter.



**Violet Ground Beetle**

Rove beetles have elongate bodies with short wing-cases that leave most of the abdominal segments uncovered. They are 2-30mm long and most are black or brown in colour. At 20-30mm, the matt black devil's coach horse is Britain's largest rove beetle and I have often found it in my garden in Edington. At first glance you could mistake it for an earwig. A nocturnal predator, this beetle lives in and around decaying matter. During the day it tends to rest among leaf litter or under stones. Females lay their eggs in the soil, and these hatch into carnivorous larvae. It overwinters as a pupa in leaf litter or moss and emerges as an adult the following spring. If you disturb a Devil's coach horse, it adopts an aggressive, scorpion-like position - it raises its rear end and opens its powerful jaws. If it still feels threatened, it squirts a foul-smelling fluid from its abdomen. Beware - this beetle can also give a painful bite.



**Devil's coach horse**

I have often observed the green tiger beetle near Tottenham's wood on Salisbury plain above Edington. They are usually seen in bright, sunny conditions during the spring and summer. It is a fast, agile hunter, running across the ground to catch its invertebrate prey, including spiders, caterpillars and ants. It is well-equipped to tackle its prey, with a ferocious set of jaws and long legs that give it an impressive turn of speed (it is one of our fastest insects and had been recorded running at speeds of 9 km per hour). When disturbed, it will often fly a short distance before running away. The larvae of the green tiger beetle hatch in burrows made by the adults in sandy soil and wait at the entrance to ambush passing prey. They stay in the burrow over winter.



**The green tiger beetle**

**Stephen Henning**

**To be continued in the December edition.**



## 100th Birthday

Amelia Melinda Rose Burbidge who now lives in Tinhead Road celebrated her 100th birthday on 26th October 2020 and we all wish her a belated Happy Birthday.

Lyn, or Linda to her friends was born on 26th October 1920, the daughter of Harry and Rose Payne. Rose stayed at home to look after the children and Harry was a steam engine driver. She has one sister Betty who is 98 who is now living with her daughter in Southampton.

The two sisters attended Edington Primary School



and then went to Westbury Secondary School – now called Matravers School. She remembered that her teachers at Edington Primary School were Miss Deer and Miss Scott and she remembers how she used to love

playing Hopscotch in the school playground.

Linda and her sister Betty used to go to Sunday School at the Chapel in Salisbury Hollow and in later years she used to help out at the Chapel fetes as well as baking cakes for them and the Harvest Festival. Before they had any mains water into their houses, she remembers having to collect fresh water from the water spout by the pond. This spring water runs down from the hill.

Her first job, which was her favourite job throughout her life, was looking after Dalmatians and taking them for walks. Linda met her first

husband Douglas Watts when she was 17 or 18 through mutual friends. Douglas lived in Bratton and was in the Royal Navy. They married on 26th December 1938 and started their married life by renting a cottage by the chapel in Salisbury Hollow, but then moved to Westbury Road.

Linda and Douglas had four children and she now has six grandchildren and ten great-grandchildren. Douglas spent 10 years in the Royal Navy and was away at sea a lot of the time. In wartime his ship was bombed and he survived several hours in the water waiting to be rescued. Because of this he contracted tuberculosis and then spent several years in and out of Winsley House in Bradford on Avon convalescing. Douglas died in October 1973 but she is still known by some people in the village as Mrs Watts. In late 1976 she remarried to Doug Burbidge and they lived in Westbury Road for a few years and then moved to a bungalow in the village, before Doug died in the mid 1990's. Among the jobs that Linda had was being the caretaker at Edington School for 25 years, spending 14 years as the post lady delivering post on her bicycle to Edington and the surrounding areas, 15 years as the cleaner of the chapel in Edington, several years as a home help and 25 years working for Mr and Mrs Gale as their housekeeper in Bratton. She was also housekeeper for John D'Arcy only giving up this job at 92 when she stopped driving.

She was the founder of the Edington Friendly Circle and was always on hand to help anyone if they needed it. Her cousins Una and Audrey still live in Edington and their brother Dennis lives in Bratton.

Sadly Linda's health has declined over the last few months and she is being cared for at home by her daughter Jackie. She has told her granddaughter Clare that her secret for a long and happy life is to work hard, have a little glass of wine at 5pm and a brandy in the evening.



## Three Daggers Farm Shop



### Lockdown latest

Gary and his team will be working through the lockdown providing a service to the village.

**The Farm Shop will be open from  
9 am - 5 pm Monday to Saturday  
and 9 am - 4 pm on Sunday's.**

We will be doing **takeaways** still on  
**Tuesday to Saturday 12 noon-4 pm**  
and **5 pm - 8.30 pm**  
and **takeaway Sunday Lunch**  
**12 noon - 2 pm.**

All of which will be bookable via the  
website

[https://www.threedaggers.co.uk/  
takeaway](https://www.threedaggers.co.uk/takeaway)

We have also launched a click and  
collect service on the website as well

[www.threedaggers.co.uk/shop](http://www.threedaggers.co.uk/shop)

## Edington Parish Hall -New Lockdown Update

In order to comply with the new regulations, the Parish Hall cannot accept bookings for the duration of the Lockdown period – 5th November to 2nd December.

However, the dfE and the Early Years Alliance have confirmed that Parent and Toddler groups can continue to meet during this lockdown period, so our Under 5's group will meet as normal, observing the social distancing guidelines set out in the Parish Hall's Special Covid-19 Conditions of Hire.

Please get in touch by email

[parishhall@edingtonwiltshire.org.uk](mailto:parishhall@edingtonwiltshire.org.uk) if you would like further information. Should the regulations change, we will of course post updates.

Stay safe and well.



We would like to reassure those of you that need us, that we are still available for transport. All drivers are now equipped with masks, disinfectant spray, and antibacterial wipes. We would ask passengers where possible to wear their own mask and sit in the rear of the car, to prevent infection and keep you safe. Please tel **07852 256939** if you need our services. We are currently looking for a new secretary, so if you think you have the necessary skills and would like to help please do get in touch!  
Marysia Garbutt (coordinator)





## School Memories

When the school closed in 1996 we produced a booklet compiled from entries in the school log, a daily record that was kept since the school's inception. Here are a few more entries from that log.

### SICKNESS & HEALTH

Before the introduction of various controls of infectious diseases, improved standards of hygiene and healthier diets there were many cases of sickness. Several reached epidemic levels with the result that the school was closed, some times for several weeks. Notably, in 1922, an outbreak of Scarlet Fever caused the school to be closed for 10 1/2 weeks.

Accidents are inevitable, especially where children are involved. The more dramatic ones are listed and show the extent to which staff were expected to render first aid.

**1919** March 13 - There are many cases of sickness in the Infant room. The children are badly coughing all day long.

April 14 - The Nurse, Mrs Broad, calls this morning and examines the children. Olive N. is singled out as being not clean in her hair.

**1920** Jan 16 - Impetigo is breaking out among the children, especially the younger ones.

Jan 20 - Visit of District Nurse and 6 cases of Contagious Impetigo are reported alike to the Medical Inspector of Schools and the Medical Officer of Health.

Jan 21 - 4 cases of Impetigo and 1 of Ringworm notified.

Jan 22 - 2 cases of Mumps, 2 cases of Whooping Cough and 1 case of Impetigo notified.

Jan 26 - Visit of District Nurse. 1 case of Ringworm, 1 of Scabies and 2 of Impetigo notified.

Jan 28 - 5 cases of Impetigo notified.

Feb 2 - 1 case of Impetigo notified.

The Medical Authority for County forwards 1 tin of Jeyes's Fluid and all desks, floors, pen holders and pencils receive a thorough dressing and washing with the solution.

Feb 3 - 1 case of Impetigo notified.

Mar 17 - Visit of Medical Inspector through the whole day and 63 cases(?) receive attention.

The local nurse assists.

Jun 4 - 3 cases of unclean hair condition are brought at once to the notice of the Local Nurse and these are excluded for 3 days to come again for the Nurse's inspection at that time.

Jun 7 - Receive notice from County Medical Authorities ratifying the above and extending the exclusion for a period of 7 days.

Jul 1 - Receive intimation that the 3 scholars mentioned for Special treatment have undergone such treatment. Payments have been made for travelling expenses.

Sep 13 - Reassemble this morning (after the Harvest Vacation) and owing to an outbreak of Whooping Cough the school is closed.

Oct 18 - School re-opens.

**1921** April 5 - The Doctor visits the school during the morning. Examines a number of children noted at his last examination. Several cases of Goitre and bad teeth have not received attention since his last visit.

April 13 - Mr W E Drummond, School Dentist, arrives at school to attend to the teeth of 50 children.

Arrangements made for his operations to be conducted in a dwelling house opposite the School. He will be engaged three days with the children from this School.

April 15 - The School Dentist has concluded his work amongst the children of this school. About 30% of the Parents of Children who were to undergo Dental treatment have refused to allow their children to be treated.

Sept 13 - Medical Inspection. 42 children inspected large number of cases of Goitre and unclean heads. A note was made by the Dr in Medical Log Book calling attention to crowded condition of Girl and Infants Cloak Room and suggesting this as a contributory cause of unclean heads.

One boy excluded for two days.

Oct 6 - Accident in School Yard during Infants recreation this morning. Margaret Amor (age 7 yrs) fell and dislocated her left elbow. I strapped the arm firmly to the side and took the child to her parents near the School who took her at once to the Dr.



## Competition time



The Edington Village Newsletter is running a competition for the young people of Edington to design a Christmas card.

There are three age groups, under 5's, 5 to 10 and 11 to 18. For each group there is a choice of how the card is designed, it can be on a computer or hand drawn, with a prize for each group.



The closing date is Monday 30th November, hand drawn entries can be handed in to Pauline at the Post Office and computer designed ones can be emailed to [newsletter@edingtonwiltshire.org.uk](mailto:newsletter@edingtonwiltshire.org.uk). Don't forget to include the name and age of the designer.

The winning entries will be published in the December edition of the Newsletter and will be available for people to download from the village website to be placed in windows to brighten up the village.



***Let's make Edington a colourful place at Christmas.***



## Small ads/swaps

We are giving readers the opportunity to advertise any items that they want to sell or swap. If you have something to sell or swap that you would like advertised in a future edition please either hand your advertisement into Pauline at the post office or email it to the newsletter, deadline 1st of each month.

### This month's bargain

#### Antique Fire Irons and the Fireplace Front Grate



A bargain at only £30  
Can be seen in Edington.....**07456140855**

## Contacting us

Email the newsletter at [newsletter@edingtonwiltshire.org.uk](mailto:newsletter@edingtonwiltshire.org.uk)  
by phone on the Edington Parish Council help line on **07933143021** (available 9am to 6pm, Monday to Friday) or via the village website [www.edingtonwiltshire.org.uk](http://www.edingtonwiltshire.org.uk)

*Don't  
forget to  
light up  
Edington  
for  
Christmas*



## Future editions

We welcome your comments on this new venture, please send them to the address below. If you would like to contribute an article to a future edition of the Edington Village News please email us with details of your article and we will contact you.

[newsletter@edingtonwiltshire.org.uk](mailto:newsletter@edingtonwiltshire.org.uk)

## Sharing the Newsletter

We are aware that not everyone in Edington has access to the internet and may therefore not receive this newsletter. Please check with your neighbours that they know about this newsletter and a paper copy can be obtained from Edington Post Office or perhaps you could volunteer to print out a copy for your neighbour. If you would like to receive this newsletter electronically please visit the village website

[www.edingtonwiltshire.org.uk/newsletter](http://www.edingtonwiltshire.org.uk/newsletter)

and enter your details or email

[newsletter@edingtonwiltshire.org.uk](mailto:newsletter@edingtonwiltshire.org.uk)

and you will be added to the mailing list.